



S5-91 (单针/Single Needle)

S5-92 (双针/Double Needle)

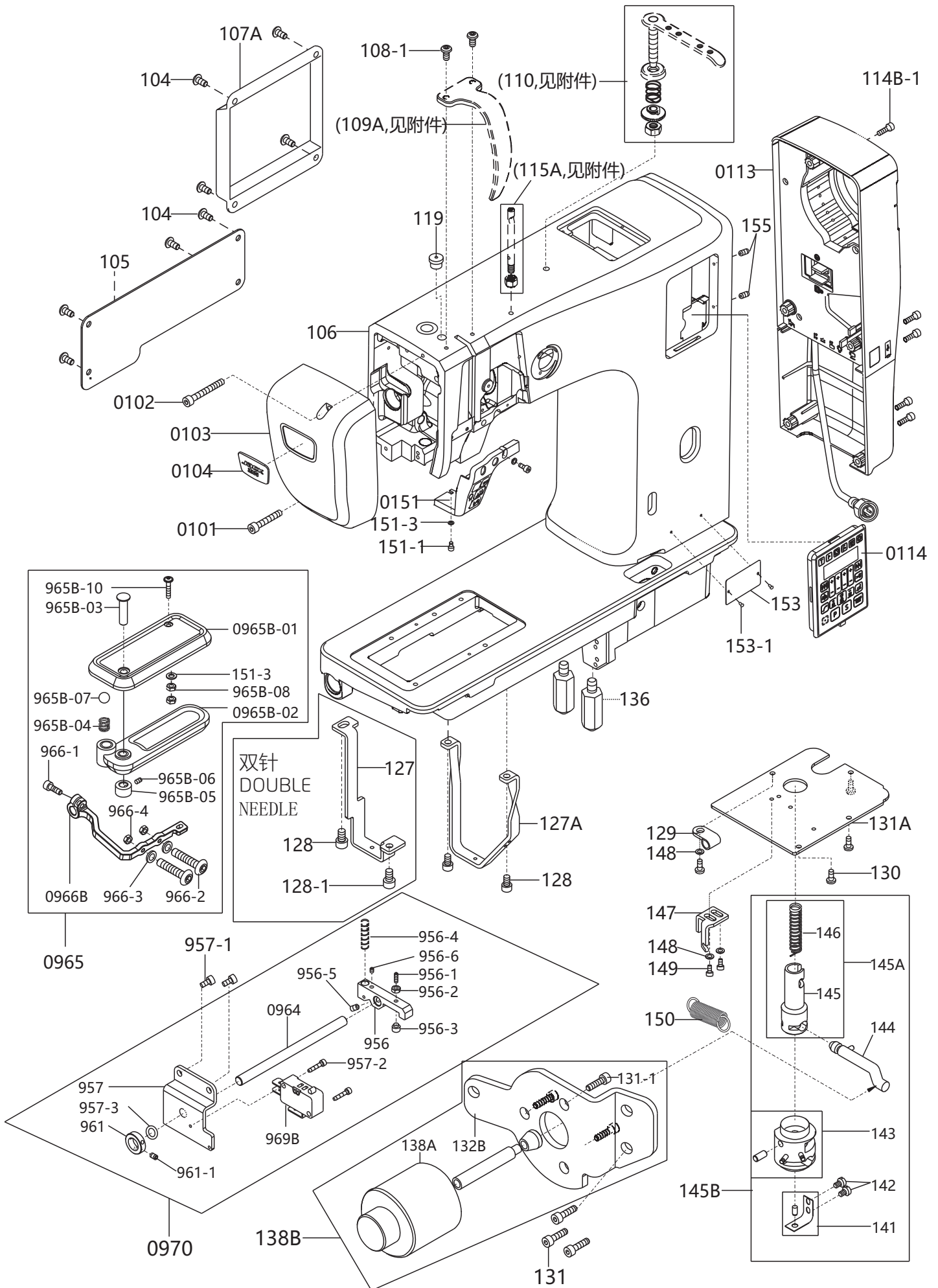
**产品使用说明书&产品零件图册**

Manual book & parts book

**JACK 杰克**

# 1、本体机构

Arm bed and it's accessories Arm bed and it's accessories

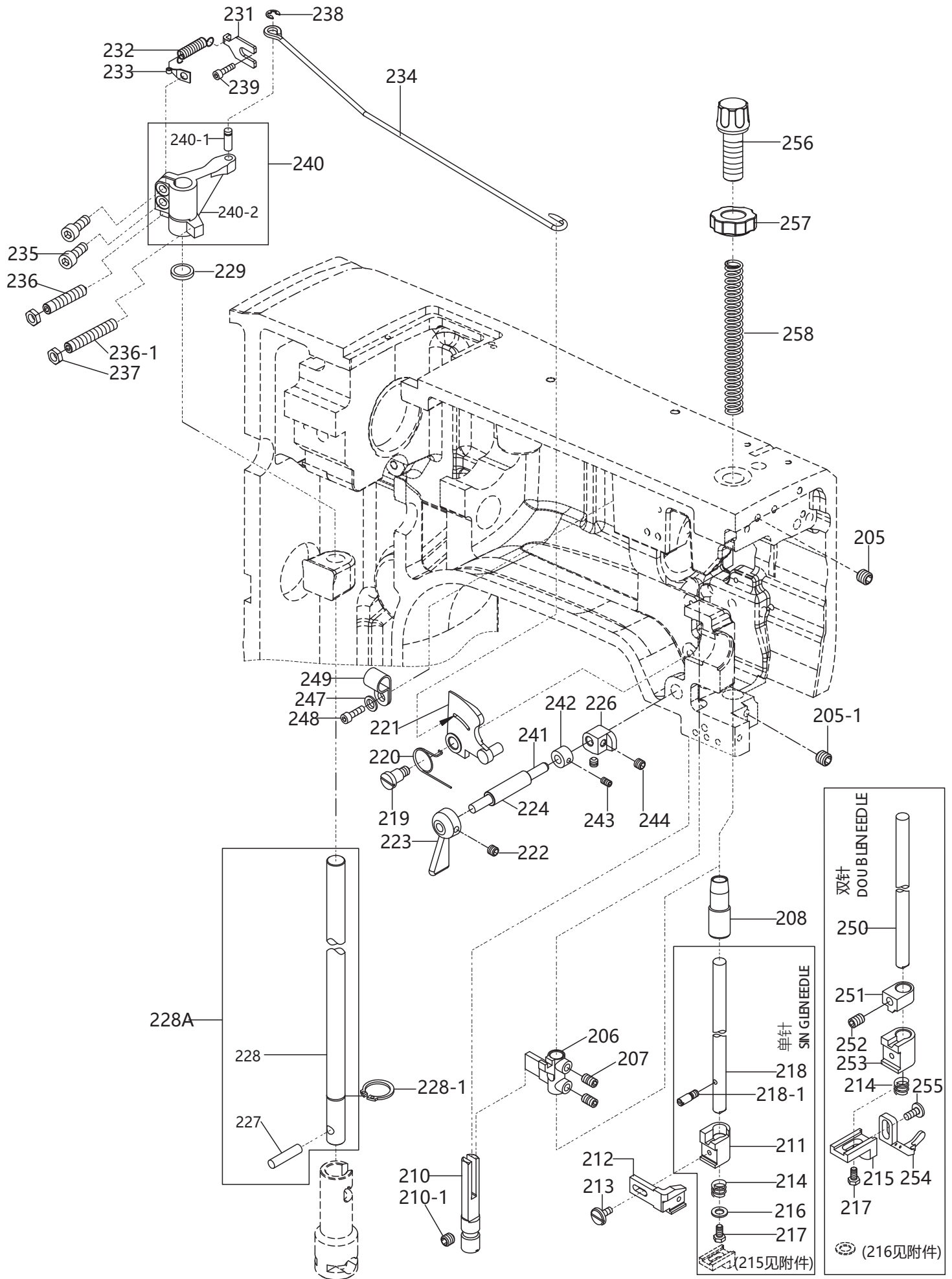


# 1、本体机构

## Arm bed and it's accessories Arm bed and it's accessories

序号 No.	件号 Part No.	零部件名称 PartName	零件描述 Description	数量 Amt.		备注
				S5-91	S5-92	
0101	S05083	内六角圆柱头螺钉M5×30(镀镍)	Screw pan M5×30(Nickelpated)	1	1	
0102	421513046	内六角圆柱头螺钉M5×45(镀镍)	Screw pan M5×45(Nickelpated)	1	1	
0103	930000153	面板	Face palte	1	1	喷漆
104	S17883	内六角平圆头螺钉M4×8(镀镍)	Screw pan M4×8(Nickelpated)	8	8	
105	930000151	松线防护板	Cover	1	1	喷漆
0106	930000574	机壳组件	Machine shell components	1	1	喷漆
107A	930000055	大防沙板	Cover	1	1	喷漆
108-1	S17884	内六角平圆头螺钉M5×10(镀镍)	Screw pan M5×10(Nickelpated)	2	2	
0113	1.5573E+10	控制器组件	Machine electronic control	1	1	
114B-1	S05955	内六角圆柱头螺钉M5×20	Screw pan M5×20	5	5	
0114	15573000100	操作面板组件	Panel	1	1	
119	155211003	油盖	Rubber plug	1	1	
127	155212003	支架B	Bracket B	0	1	
127A	155212004	支架	Bracket	1	1	
128	S05962	内六角圆柱头螺钉M6×12	Screw pan M6×12	2	3	
128-1	S05951	内六角圆柱头螺钉M5×10	Screw pan M5×10	0	1	
129	155211015	R线夹12.7	R type clamp 12.7	1	1	
130	1550NS11001	一字圆柱头螺钉M5×10	Screw pan M5×10	4	4	
131	S05962	内六角圆柱头螺钉M6×12	Screw pan M6×12	3	3	
131-1	S05961	内六角圆柱头螺钉M6×10(发黑)	Screw pan M6×10	1	1	
131A	155212042	底盘座	Bottom cover	1	1	
132B	155212005	电磁铁架	Electromagnetic iron frame	1	1	
136	1552NS30001	六角钢	Bed leg	2	2	
138A	1.5523E+10	抬压脚电磁铁组件	Lifting foot electromagnet assembly	1	1	
145B	1.552E+10	膝控抬压脚(组件)	Knee lifter lever	1	1	
147	155212008	拉簧座	Tension s pring seat	1	1	
148	W01146	平垫圈M5	Flat washer M5	3	3	
149	S05959	内六角圆柱头螺钉M5×8	Screw pan M5×8	2	2	
150	155227069	S5-150弹簧	S5-150 Spring	1	1	
0151	1.5573E+10	机头灯组件	Light switch assembly	1	1	
151-1	S05941	内六角圆柱头螺钉 M3×6	Screw pan M3×6	2	2	
151-3	W01144	平垫圈M3	Flat washer M3	3	3	
0152	155701004	商标牌	Trade mark	1	1	
153	155237001	空白型号牌	Type number plate	1	1	
153-1	R03008	型号牌铆钉2.5×5	Rivet 2.5×5	2	2	
155	S10072	内六角凹端紧定螺钉M4×10	Screw pan M4×10	2	2	
956	155209018	开关压板	Switch plate	1	1	
956-1	S10073	内六角凹端紧定螺钉M4×16	Screw pan M4×16	1	1	
956-2	N01103	六角螺母M4	Nut M4	1	1	
956-3	155226009	限位柱	Limit column	1	1	
956-4	155227004	栓销弹簧	Pin spring	1	1	
956-5	S10080	内六角凹端紧定螺钉M5×6	Screw pan M5×6	1	1	
956-6	S10074	内六角凹端紧定螺钉M4×4	Screw pan M4×4	1	1	
957	155212038	倒缝扳手座	Reverse feed lever pxing plate	1	1	
957-1	S05951	内六角圆柱头螺钉M5×10	Screw pan M5×10	2	2	
957-2	S05938	内六角圆柱头螺钉M3×14	Screw pan M3×14	2	2	
957-3	O01151	O型橡胶密封圈	O-ring	1	1	
961	155008007	定环	Stationary ring	1	1	
961-1	1550NS14001	内六角凹端紧定螺钉M6×0.75×6	Screw pan M6×0.75×6	2	2	
0964	155702001	倒缝扳手轴	Reverse feed lever shaft	1	1	
0965B-01	155744001	倒缝扳手上盖	Cover for reverse wrench	1	1	
0965B-02	1.5574E+10	旋转扳手组件	Rotary wrench assembly	1	1	
965B-03	155226010	固定销	Dowel pin	1	1	
965B-04	155227011	弹簧	Spring M4×5	1	1	
965B-05	155208001	锁圈	Lock ring	1	1	
965B-06	S10074	内六角凹端紧定螺钉M4×4	Screw pan M4×4	1	1	
965B-07	155209020	钢珠Sφ8	Steel ball Sφ8	1	1	
965B-08	N01105	六角螺母M3	Nut M3	2	2	
965B-10	S17902	内六角圆头带垫螺钉M3×16(镀镍)	Screw pan M3×16(Nickelpated)	1	1	
0966B	155705001	倒缝扳手连杆	Reverse wrench connecting rod	1	1	
966-1	S05951	内六角圆柱头螺钉M5×10	Screw pan M5×10	1	1	
966-2	S04234	内六角平圆头螺钉M4×14	Screw pan M4×14	2	2	
966-3	W01145	平垫圈M4	Flat washer M4	2	2	
966-4	N01103	六角螺母M4	Nut M4	2	2	
969B	1.5523E+10	点动开关	Inching switch	1	1	

## 2、压棒机构 Presser foot bar mechanism

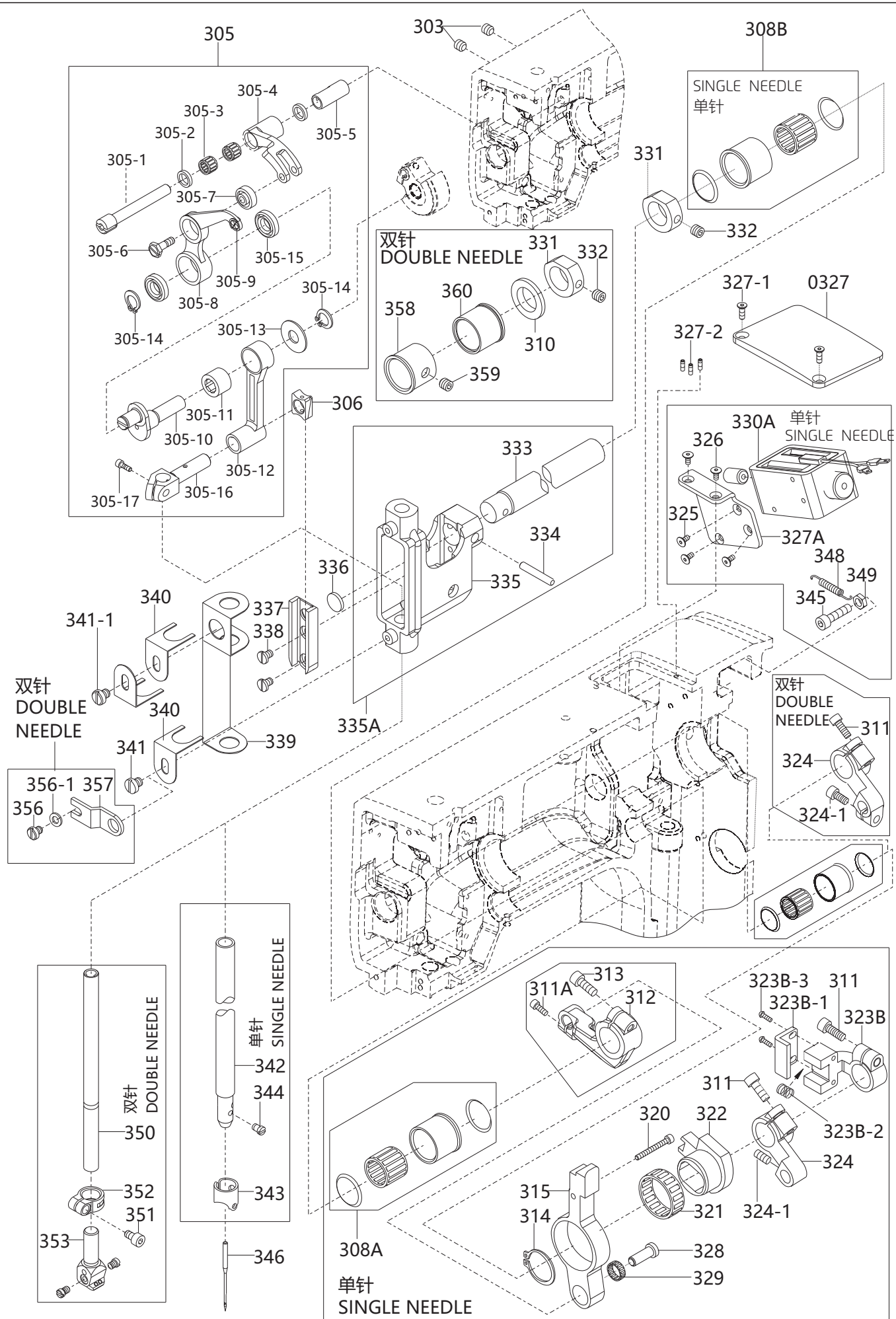


## 2、压棒机构

## Presser foot bar mechanism

序号 No.	件号 Part No.	零部件名称 PartName	零件描述 Description	数量 Amt.		备注
				S5-91	S5-92	
205	S10080	内六角凹端紧定螺钉M5×6	Screw pan M5×6	1	1	
205-1	S10079	内六角锥端紧定螺钉M5×5	Screw pan M5×5	1	1	
206	155001001	压棒固定座	Setting seat of pressure bar	1	1	
207	1550N514001	内六角凹端紧定螺钉M6×0.75×6	Screw pan M6×0.75×6	2	2	
208	155503002	压棒下套管	Running casing of pressure bar	1	1	
210	155009001	导轨棒	Guide rods	1	1	
210-1	S10081	内六角凹端紧定螺钉M5×8	Screw pan M5×8	1	1	
211	155201004	轮钱下座	Front seat	1	0	
212	155201005	轮钱连接座	Connecting seat	1	1	
213	1550N511012	一字圆柱头螺钉	Screw	1	1	
214	155027001	弹簧	Spring	1	1	
215	155009002	顶针座	Thimble seat	0	1	
216	155228010	平垫圈	Flat washer	1	0	
217	1550N511012	外六角螺丝	Bolt	1	1	
218	155202001	压棒	Pressure bar	1	0	
218-1	1550N515001	螺钉	Screw	1	0	
219	1550N511003	一字圆柱头螺钉	Screw	1	1	
220	155027002	弹簧	Spring	1	1	
221	155004001	沙拉心座组	Bobbin thread tensionasm	1	1	
222	S10080	内六角凹端紧定螺钉M5×6	Screw pan M5×6	1	1	
223	155209153	压棒提杆	Lifting rod of pressure bar	1	1	喷漆
224	155703013	压棒提杆套管	Lifting sleeve of pressure bar	1	1	
226	155201006	压棒提升器	Lifter of pressure bar	1	1	
228A	155002001	压脚长轴组件	Presser foot long axis	1	1	
228-1	H03066	轴用弹性挡圈12	Circlips for shaft 12	1	1	
229	155028001	调整垫片	Washer	1	1	
231	155012001	弹簧固定板	Spring fixing plate	1	1	
232	155227003	离合拉簧	Clutch spring	1	1	
233	155012002	弹簧固定板	Spring fixing plate	1	1	
234	155227001	脚弓连接杠杆	Arch connecting lever	1	1	
235	S05952	内六角圆柱头螺钉M5×12	Screw pan M5×12	2	2	
236	S12031	内六角圆柱端紧定螺钉M6×30	Screw pan M6×30	1	1	
236-1	S09157	内六角圆柱端紧定螺钉M6×35	Screw pan M6×35	1	1	
237	N01104	六角螺母M6	Nut M6	2	2	
238	H05026	开口挡圈4	Erings 4	1	1	
239	S05967	内六角圆柱头螺钉M6×8	Screw pan M6×8	1	1	
240	155004003	上下输送臂	Upper and lower conveying arm	1	1	
241	155202002	压棒提杆轴	Pressure rod lifting shaft	1	1	
242	155208001	锁圈	Lock ring	1	1	
243	S10074	内六角凹端紧定螺钉M4×4	Screw pan M4×4	1	1	
244	S10080	内六角凹端紧定螺钉M5×6	Screw pan M5×6	2	2	
247	W01145	平垫圈M4	Flat washer M4	1	1	
248	S05949	内六角圆柱头螺钉 M4×8	Screw pan M4×8	1	1	
249	155211010	油管护架	Tubing guard	1	1	
250	155202020	压棒(双针)	Pressure bar(Double needle)	0	1	
251	155303001	送料轮钱上座(双针)	Front upper seat of feeding wheel(Double n	0	1	
252	S10080	内六角凹端紧定螺钉M5×6	Screw pan M5×6	0	1	
253	155301003	轮钱下座(双针)	Below seat of wheel (Double needle)	0	1	
254	155301005	双针带护手靠边	Pull aside with hand guard (Double needle)	0	1	
255	1550N511013	一字圆柱头螺钉	Screw	0	1	
256	155544001	压脚调压螺钉	Lifting presser adjusting Screw	1	1	
257	1555N516001	调压旋钮螺母	Lifting presser adjusting nut	1	1	
258	155527002	压脚弹簧	Lifting presser spring	1	1	

### 3、天平及针棒摇动台机构 Take-up lever & needle bar rocking mechanism

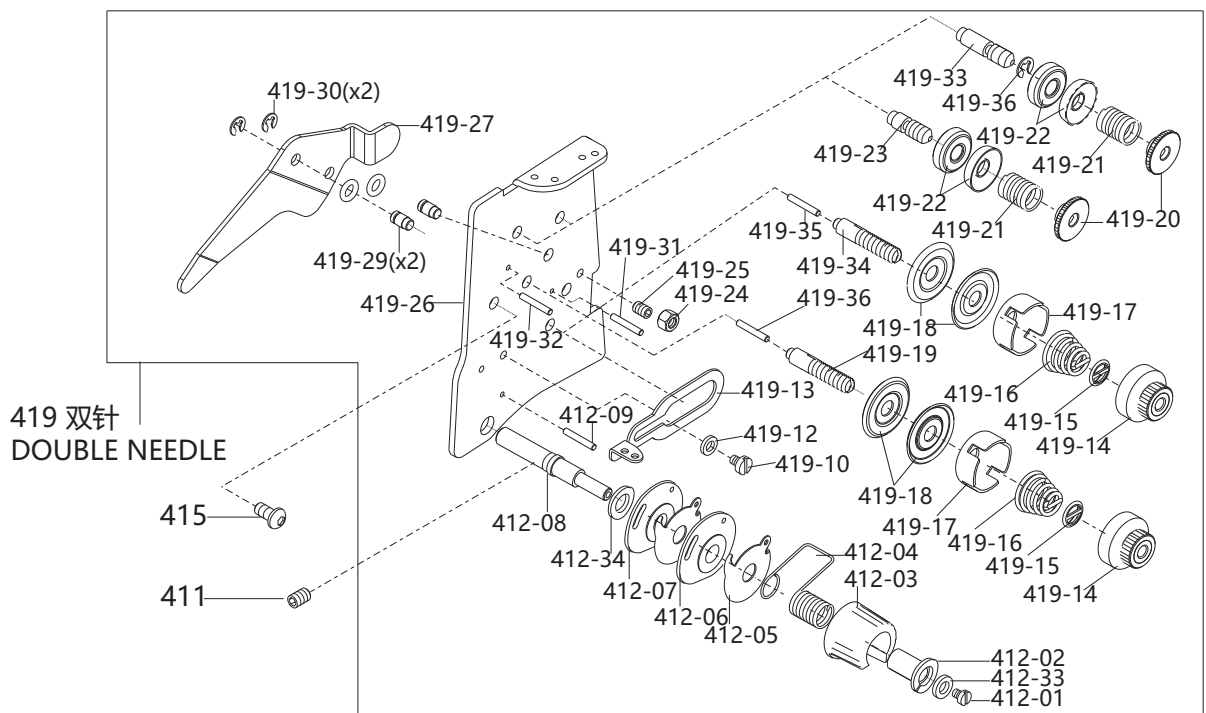
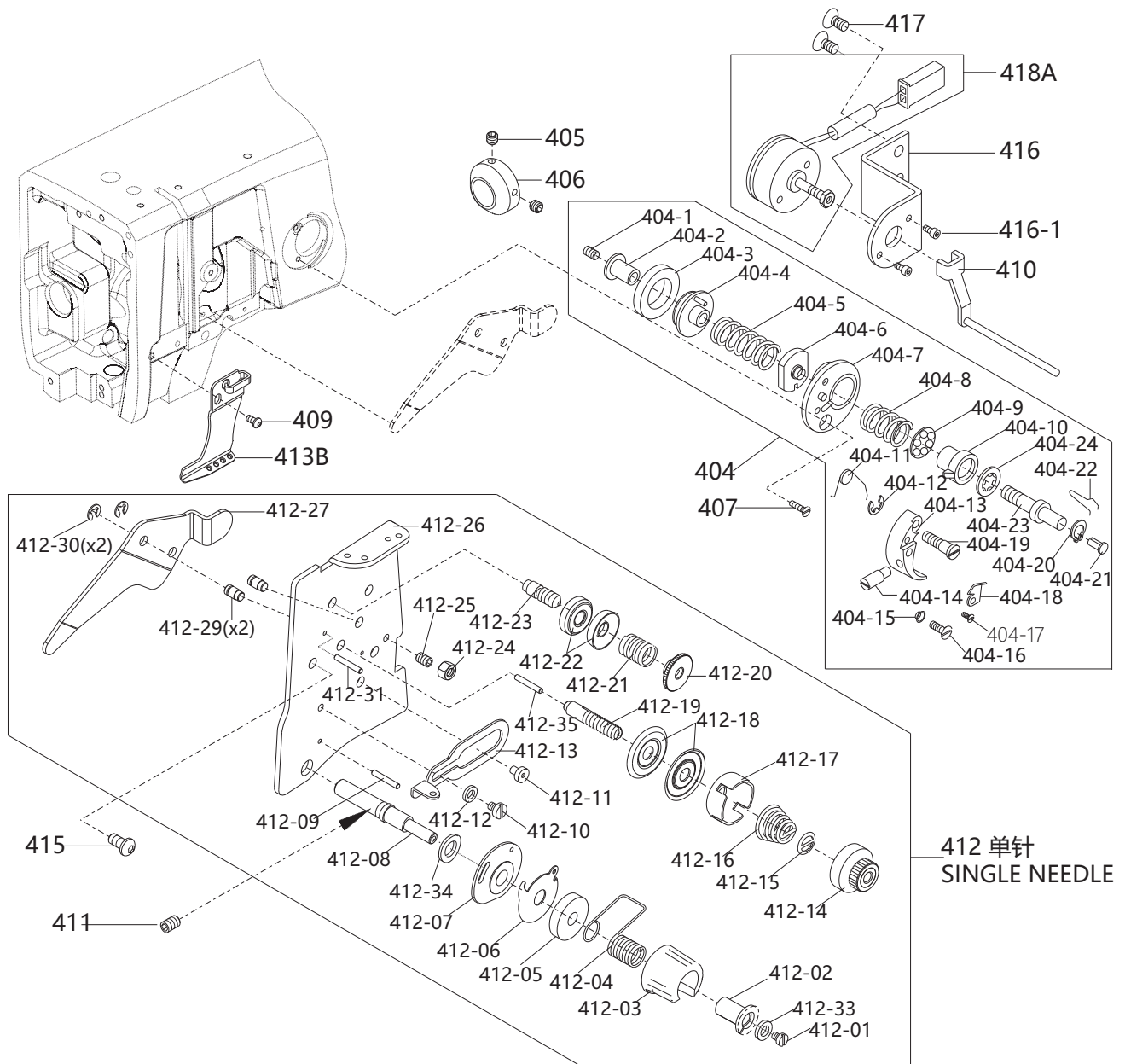


### 3、天平及针棒摇动台机构

#### Take-up lever & needle bar rocking mechanism

序号 No.	件号 Part No.	零部件名称 PartName	零件描述 Description	数量 Amt.		备注
				S5-91	S5-92	
303	S10081	内六角凹端紧定螺钉M5×8	Screw pan M5×8	2	2	
305	15523800200	单针天秤组件	Thread take-up asm(Single needle)	1	0	
305	15523800100	双针天秤组件	Thread take-up asm(Double needle)	0	1	
306	155009003	针棒道引滑块	Needle bar guide slider	1	1	
308A	15512400100	培林套管组件(φ23)	Casing of bearing(φ23)	1	0	
308B	15512400200	培林套管组件(φ24)	Casing of bearing(φ24)	1	0	
310	155012008	垫片	Washer	0	2	
311	S05964	内六角圆柱头螺钉M6×16	Screw pan M6×16	2	1	
311A	S05952	内六角圆柱头螺钉 M5×12	Screw pan M5×12	1	0	
312	155201007	针送支臂	Needle delivery arm	1	0	
313	S05953	内六角圆柱头螺钉M5×14	Screw pan M5×14	1	0	
314	H03070	轴用弹性挡圈24	Circlips for shaft 24	1	0	
315	155205012	凸轮连杆	Cam connecting rod	1	0	
320	1552NS13006	轴肩螺钉	Screw	1	0	
321	155024001	滚针培林	Needle bearing	1	0	
322	155209001	滑块凸轮	Slider cam	1	0	
323B	155209008	滑块凸轮导向座	Slide cam guide seat	1	0	
323B-1	155212010	固定块	Fixed block	1	0	
323B-2	155227004	弹簧	Spring	1	0	
323B-3	S17895	内六角平圆头螺钉M3×6	Screw pan M3×6	2	0	
324	155201010	滑块凸轮摆杆	Swinging rod of slider cam	1	1	
324-1	S10080	内六角凹端紧定螺钉M5×6	Screw pan M5×6	1	1	
325	S12026	内六角沉头螺钉M4×6	Screw pan M4×6	3	0	
326	S12027	内六角沉头螺钉M4×8	Screw pan M4×8	2	0	
327	930000150	盖板	Cover plate	1	1	喷漆
327-1	S12024	内六角沉头螺钉M4×12(镀镍)	Screw pan M4×12(Nickelpated)	2	2	
327-2	S10072	内六角凹端紧定螺钉M4×10	Screw pan M4×10	3	3	
327A	155212012	电磁铁固定板	Electromagnet fixed plate	1	0	
328	155026001	固定销(短)	Pin (short)	1	0	
329	155024002	滚针培林	Needle bearing	1	0	
330A	15523001900	针摆电磁铁组件	Needle pendulum electromagnet	1	0	
331	155008001	固定环	Retaining ring	1	2	
332	1550NS14001	内六角凹端紧定螺钉M6×0.75×6	Screw pan M6×0.75×6	1	2	
335A	15520101100	针棒座组件	Needle bar support frame	1	1	
336	155023001	油棉	Oil cotton	1	1	
337	155009004	针棒连接器导槽	Needle bar connecting link guide	1	1	
338	1550NS11013	一字圆柱头螺钉(薄)	Screw	2	2	
339	155023002	油棉	Oil cotton	1	1	
340	155012017	油棉压板	Pressboard of oil cotton	3	3	
341	1550NS11013	一字圆柱头螺钉(薄)	Screw	1	1	
341-1	1550NS11019	一字圆柱头螺钉(厚)	Screw	1	1	
342	155002002	单针针棒	Needle bar	1	0	
343	155703014	针棒套环(加切口)	Ring clamp	1	0	
344	1557NS11003	机针螺钉(进口)	Screw of needle (Imported)	1	0	
345	S05952	内六角圆柱头螺钉M5×12	Screw pan M5×12	1	0	
346	155217001	机针(INDP×5#16)	Needle INDP×5#16	1	2	
348	155227002	拉簧	Tension spring	1	0	
349	N01106	六角螺母M5	Nut M5	1	0	
350	155002003	双针针棒	Needle bar(Double needle)	0	1	
351	S05949	内六角圆柱头螺钉M4×8	Screw pan M4×8	0	1	
352	155008002	针棒套环	Ring clamp	0	1	
353	15531700300	针榴组件(2.4规格)	Pin chuck 2.4	0	1	
356	1550NS11007	一字半圆头螺丝M5×8	Screw M5×8	0	1	
356-1	W01146	平垫圈M5	Flat washer M5	0	1	
357	155012005	针棒座固定板	Guide plate	0	1	
358	155303002	摆针轴左套管	Left casing	0	1	
359	S10089	内六角凹端紧定螺钉M6×12	Screw pan M6×12	0	1	
360	155003005	摆针轴右套管	Right casing	0	1	

# 4、缝线压力调整机构 Upper thread tension regulation mechanism





#### 4、缝线压力调整机构

##### Upper thread tension regulation mechanism

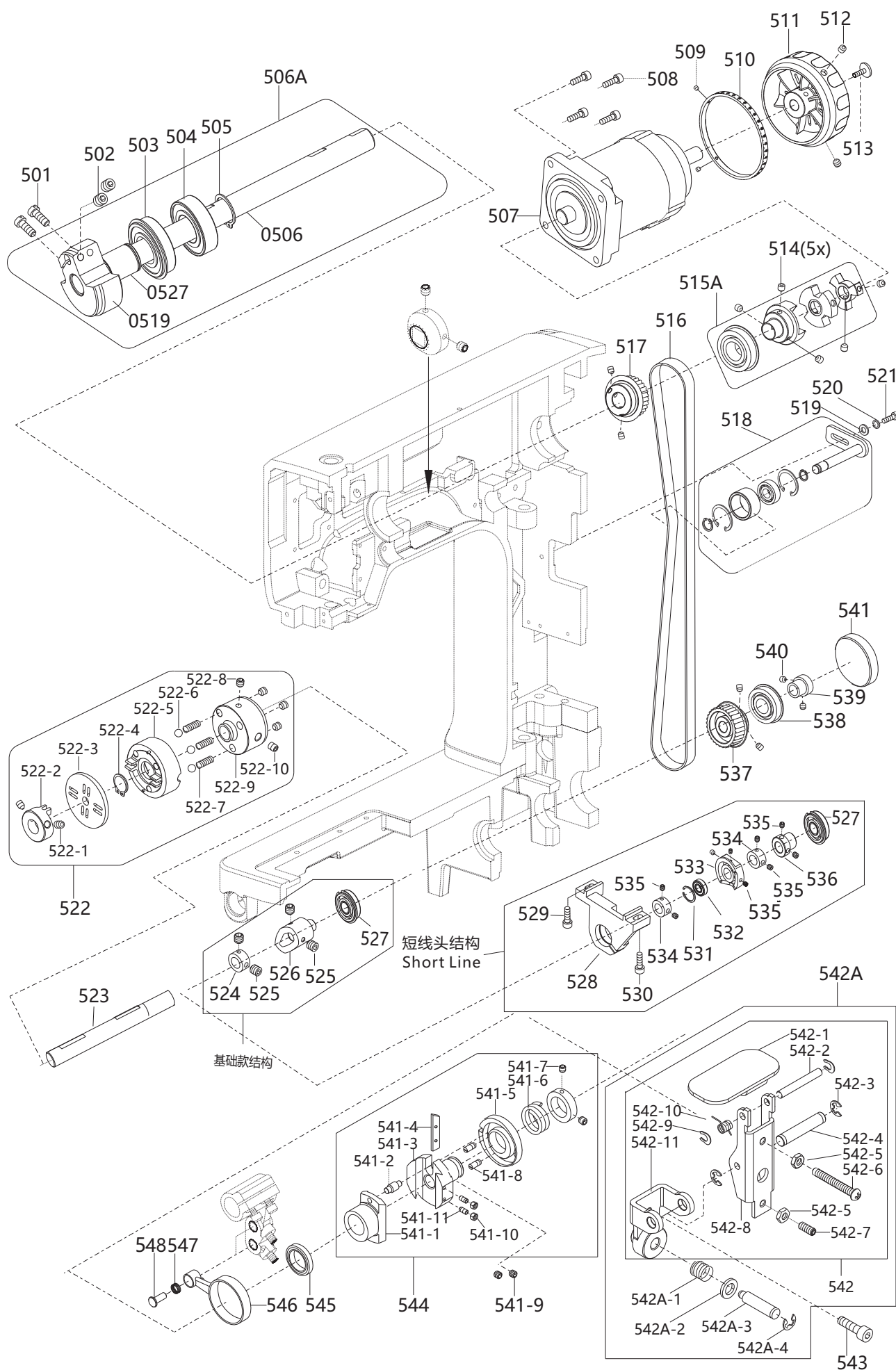
序号 No.	件号 Part No.	零部件名称 PartName	零件描述 Description	数量 Amt.		备注
				S5-91	S5-92	
404	15521300100	绕线器组件	Bobbin winder unit	1	1	
405	S10080	内六角凹端紧定螺钉M6×8	Screw pan M6×8	2	2	
406	155225074	锥形传动轮	Conical drive wheel	1	1	
407	1552NS17002	开槽沉头螺钉(镀镍)	Screw(Nickelpated)	1	1	
409	S17884	内六角平圆头螺钉M5×10(镀镍)	Screw pan M5×10(Nickelpated)	1	1	
410	15521201400	松线销组件	Tension releasing pin asm	1	1	
411	S10081	内六角凹端紧定螺钉M5×8	Screw pan M5×8	1	1	
412	15521300200	单针沙拉组件	Single needle Thread tension asm	1	0	
413B	155213003	过线板	Thread tension guide plate	1	1	
415	S17883	内六角平圆头螺钉M4×8(镀镍)	Screw pan M4×8(Nickelpated)	1	1	
416	155212015	松线阀座	Solenoid valve fixing plate	1	1	
416-1	S05940	内六角圆柱头螺钉M3×5	Screw pan M3×5	2	2	
417	S12029	内六角沉头螺钉M5×10	Screw pan M5×10	2	2	
418A	15523001800	电磁铁组件(松线)	Solenoid valve (loose thread)	1	1	
419	15521300300	双针沙拉组件	Double needle Thread tension asm	0	1	

#### 5、主轴传动机构

##### Upper & main shaft transmission mechanism

501	1550NS11001	一字圆柱头螺钉M5×10	Screw pan M5×10	2	2	
502	1550NS14001	内六角凹端紧定螺钉M6×0.75×6	Screw pan M6×0.75×6	2	2	
503	B02018	深沟球轴承(60/22ZZNR)	Ball bearing(60/22ZZNR)	1	1	
504	B04021	深沟球轴承(60/22ZZ)	Ball bearing(60/22ZZ)	1	1	
505	H03035	轴用弹性挡圈22	Circlips for shaft 22	1	1	
506A	15571000100	凸轮组件	Cam assembly	1	1	
507	15573300100	电机	Motor	1	0	
507	15573300200	电机(双针)	Motor(Double needle)	0	1	
508	S05955	内六角圆柱头螺钉M5×20	Screw pan M5×20	4	4	
509	207S14009	内六角平端紧定螺钉	Screw pan M3×3	2	2	
510	155703001	刻度环	Scale ring	1	0	
510	155703009	双针刻度环	Double needle scale ring	0	1	
511	930000167	手轮	Hand wheel	1	0	喷漆
511	930000384	双针手轮	Double needle hand wheel	0	1	喷漆
512	S10086	内六角凹端紧定螺钉M6×8	Screw pan M6×8	2	2	
513	S17903	内六角半圆头带垫螺钉M6×10	Screw pan M6×10	1	1	
514	S10092	内六角凹端紧定螺钉M6×0.75×8	Screw pan M6×0.75×8	5	0	
515	15570300600	联轴器组件(带轴承)	Coupling components	1	1	
516	155235034	同步带(加宽)	Synchronous belt	1	0	
517	155235032	上齿形带轮(加宽)	Timing wheel asm(Up)	1	1	
518	15523500100	带轮调节组件	Pulley regulate assembly	1	1	
519	W01146	平垫圈M5	Flat washer M5	1	1	
520	W02001	弹簧垫圈M5	Spring washer M5	1	1	
521	S05952	内六角圆柱头螺钉M5×12	Screw pan M5×12	1	1	
522	15520101400	离合器组件	Clutch assembly	1	1	
523	155202018	万向连接轴(单带)	Universal connecting shaft	1	1	
524	155208005	定环	Fixed ring	1	1	
525	1550NS14001	内六角凹端紧定螺钉M6×0.75×6	Screw pan M6×0.75×6	4	4	
526	155201015	剪线凸轮	Trimming cam	1	1	
527	B10065	滚珠培林	Ball bearing(BB620ZZNR)	1	1	
528	155201037	轴承座	Bearing housing	1	0	
529	S05028	内六角圆柱头螺钉M6×14	Screw pan M6×14(Single belt)	1	0	
530	S05040	内六角圆柱头螺钉M6×20	Screw pan M6×20(Single belt)	1	0	
531	H01107	孔用弹性挡圈28	Circlips for hole 28	1	1	
532	B01046	滚珠培林(6001-2RZ/Z2)	Ball bearing(6001-2RZ/Z2)	1	1	
533	155210007	剪线凸轮	Trimming cam	1	0	
534	155208005	定环	Fixed ring	2	2	
535	1550NS14001	内六角凹端紧定螺钉M6×0.75×6	Screw pan M6×0.75×6	8	8	
536	155003017	轴承套管(左)	Casing of bearing(left)	1	0	
537	155235033	下齿形带轮(加宽)	Timing wheel asm(down)	1	1	
538	B10047	GB/T276深沟球轴承6203ZZNR	Ball bearing(GB/T276 6203ZZNR)	1	0	
539	155003007	轴承套管(右)	Casing of bearing(right)	1	1	
540	1550NS14001	内六角凹端紧定螺钉M6×0.75×6	Screw pan M6×0.75×6	2	2	
541	155011002	保护盖	Protection cap	1	1	
542A	15521200700	送料调整按钮组件	Feeding adjustment button asm	1	1	
543	S05943	内六角圆柱头螺钉M4×10	Screw pan M4×10	1	1	
544	15500100300	凸轮组件	Cam asm	1	1	
544-9	S10086	内六角凹端紧定螺钉M6×8	Screw pan M6×8	2	2	

# 5、主轴传动机构 Upper & main shaft transmission mechanism



## 5、主轴传动机构

### Upper & main shaft transmission mechanism

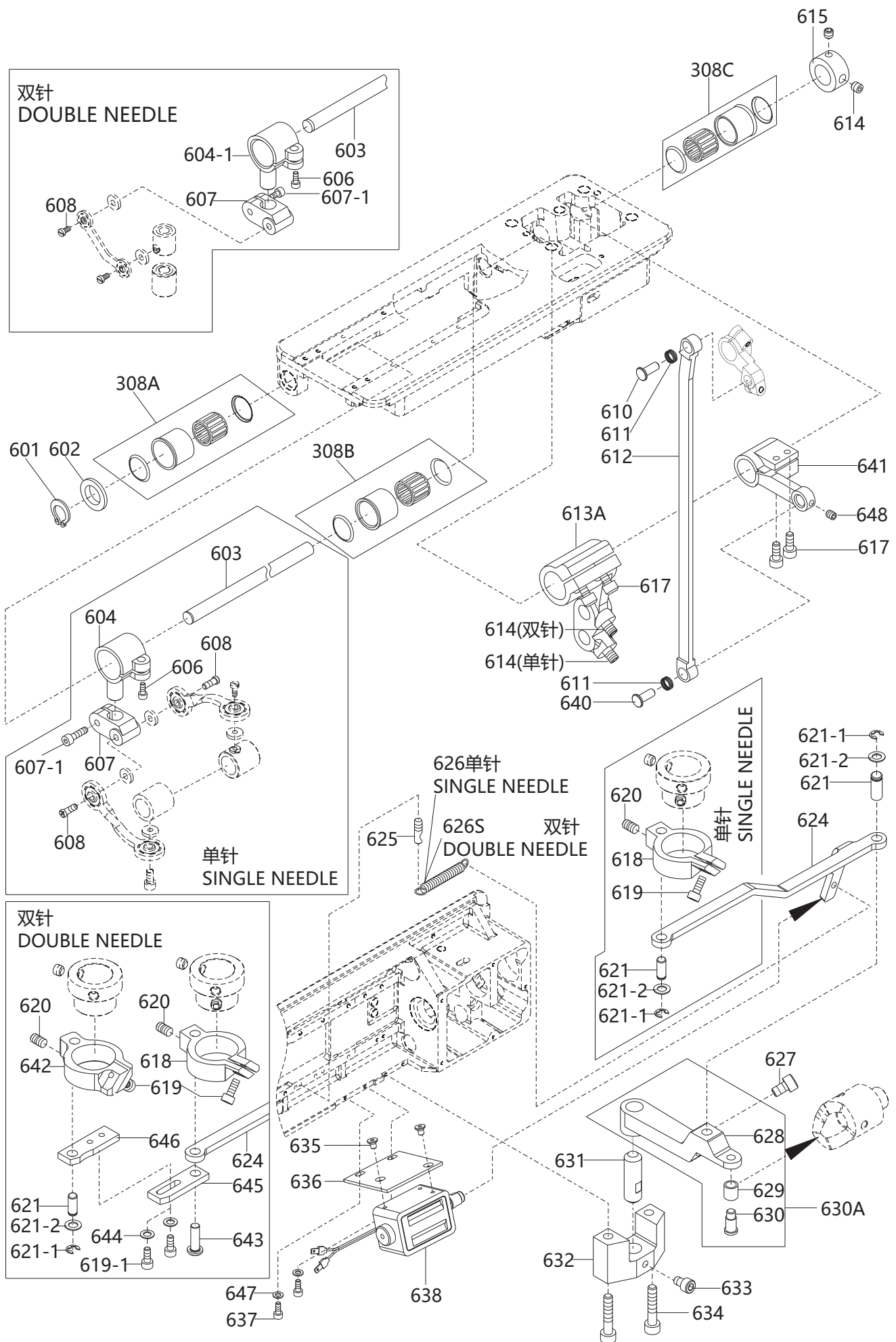
序号 No.	件号 Part No.	零部件名称 PartName	零件描述 Description	数量 Amt.		备注
				S5-91	S5-92	
545	B01075	GB/T276深沟球轴承6906ZZ	Ball bearing (GB/T276 6906ZZ)	1	1	
546	155005002	连杆	Connecting rod	1	1	
547	155024002	滚针培林	Needle bearing	1	1	
58	155026002	固定销(26)	Dowel pin (26)	1	1	

## 6、下送料、剪线机构(单带)

### Lower feed & thread trimming mechanism

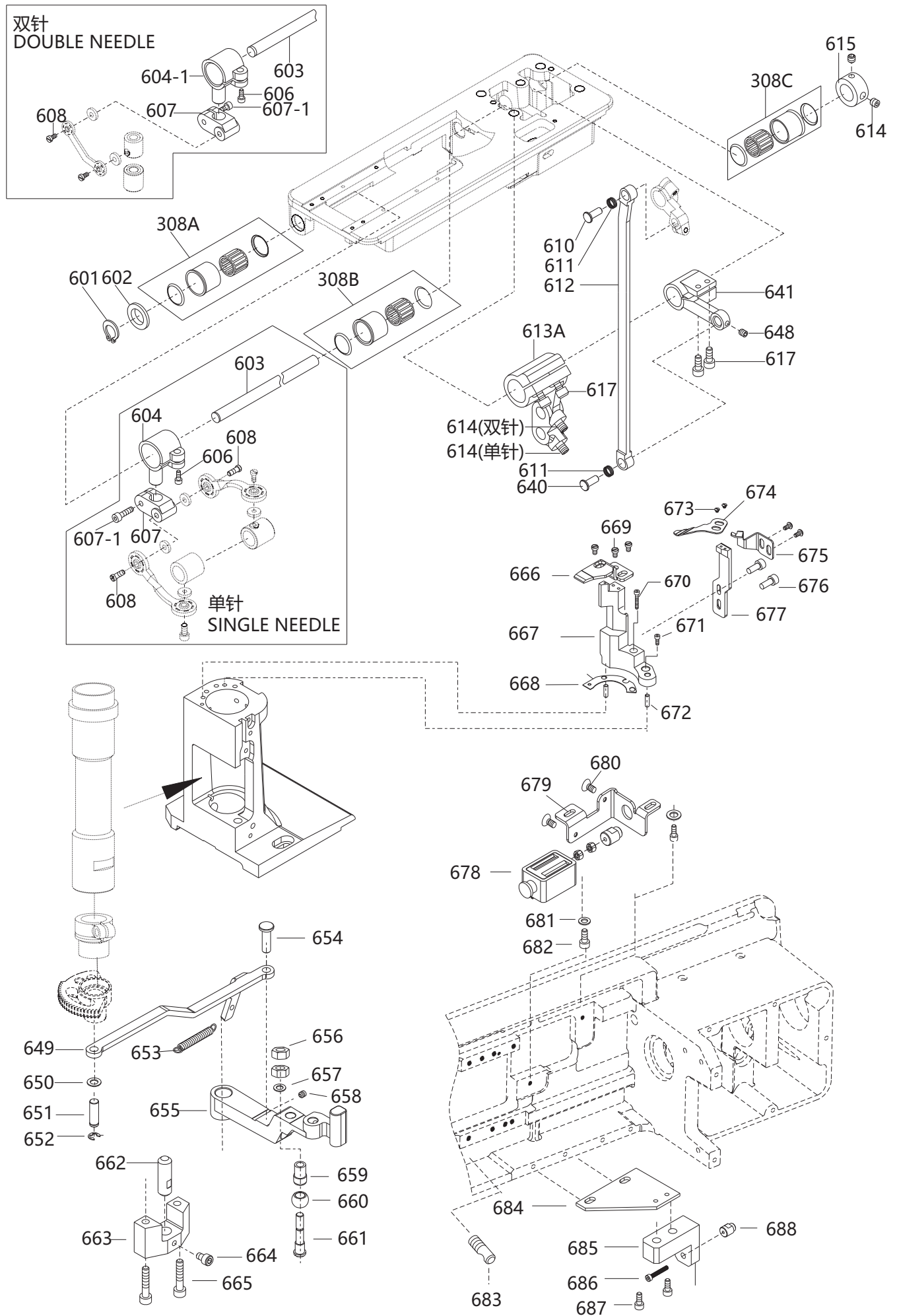
序号 No.	件号 Part No.	零部件名称 PartName	零件描述 Description	数量 Amt.		备注
				S5-91	S5-92	
308A	15512400100	培林套管组件(φ23)	Casing of bearing(φ23)	1	1	
308B	15512400200	培林套管组件(φ24)	Casing of bearing(φ24)	1	1	
308C	15520300300	培林套管组件(φ25)	Casing of bearing(φ25)	1	1	
601	H03067	轴用弹性挡圈15	Circlips for shaft 15	1	1	
602	155012008	垫片	Washer	1	1	
603	155202006	下送料轴	Feed rocker shaft	1	1	
604	155004005	万向连接头	Crank	1	0	
604-1	155004006	万向连接头	Crank	0	1	
606	S05952	内六角圆柱头螺钉M5×12	Screw pan M5×12	1	1	
607	155004007	万向连接座	Clamp	1	1	
607-1	S05943	内六角圆柱头螺钉M4×10	Screw pan M4×10	1	1	
608	1550NS11016	一字圆柱头螺钉(长)	Screw	2	1	
610	155026002	固定销(26)	Dowel pin (26)	1	1	
611	155024002	滚针培林	Needle bearing	2	2	
612	155005003	连杆	Connecting rod	1	1	
613A	155204001	左单向输送支臂	Left one-way delivery arm	1	1	
614	1550NS14001	内六角凹端紧定螺钉M6×0.75×6	M6×0.75×6 Screw pan M6×0.75×6	3	3	
615	155008004	固定环	Retaining rin	1	1	
617	S05954	内六角圆柱头螺钉M5×16	Screw pan M5×16	4	4	
618	155204003	剪线摆杆架	Swinging rod	1	1	
619	S05951	内六角圆柱头螺钉M5×10	Screw pan M5×10	1	2	
619-1	S05943	内六角圆柱头螺钉M4×10	Screw pan M4×10	0	2	
620	S10080	内六角凹端紧定螺钉M5×6	Screw pan M5×6	1	2	
621	155226004	摆杆销(短)	Pendulum pin	2	2	
621-1	H05914	开口挡圈5	Erings 5	2	2	
621-2	W01147	平垫圈M6	Flat washer M6	2	2	
624	155212018	拉杆	Pull rod	1	1	
625	155226005	拉簧销	Tension spring pin	1	1	
626	155227005	拉簧	Tension spring	0	1	
626S	155327001	双针拉簧	Double needle tension spring	0	1	
627	S05959	内六角圆柱头螺钉M5×8	Screw pan M5×8	1	1	
630A	15520400800	离合器臂(组件)	Clutch arm (asm)	1	1	
631	155202007	离合器轴	Clutch shaft	1	1	
632	155209010	剪线座	Trimmer	1	1	
633	S05959	内六角圆柱头螺钉M5×8	Screw pan M5×8	1	1	
634	S05957	内六角圆柱头螺钉M5×30	Screw pan M5×30	2	2	
635	S12026	内六角沉头螺钉M4×6	Screw pan M4×6	2	2	
636	155212019	电磁铁固定板	Electromagnet fixing plate	1	1	
637	S05951	内六角圆柱头螺钉M5×10	Screw pan M5×10	2	2	
638	15523000600	电磁铁(剪线)	Electromagnet(trimming)	1	1	
640	155226014	固定销	Dowel pin(22)	1	1	
641	155204004	右单向输送支臂	Right one-way delivery arm	1	1	
642	155205005	双针左摆杆	Double needle left swing rod	0	1	
643	155226006	摆杆销	Pendulum pin	0	1	
644	W01145	平垫圈M4	Flat washer M4	0	2	
645	155212020	切线连接块一	Tangent connecting plate I	0	1	
646	155212021	切线连接块二	Tangent connecting plate II	0	1	
647	W01146	平垫圈M5	Flat washer M5	2	2	
648	S10078	内六角凹端紧定螺钉M5×4	Screw pan M5×4	1	1	

# 6、下送料、剪线机构(单带) Lower feed & thread trimming mechanism



## 6、剪线机构 (短线头)

### Wire cutting mechanism (short thread head)



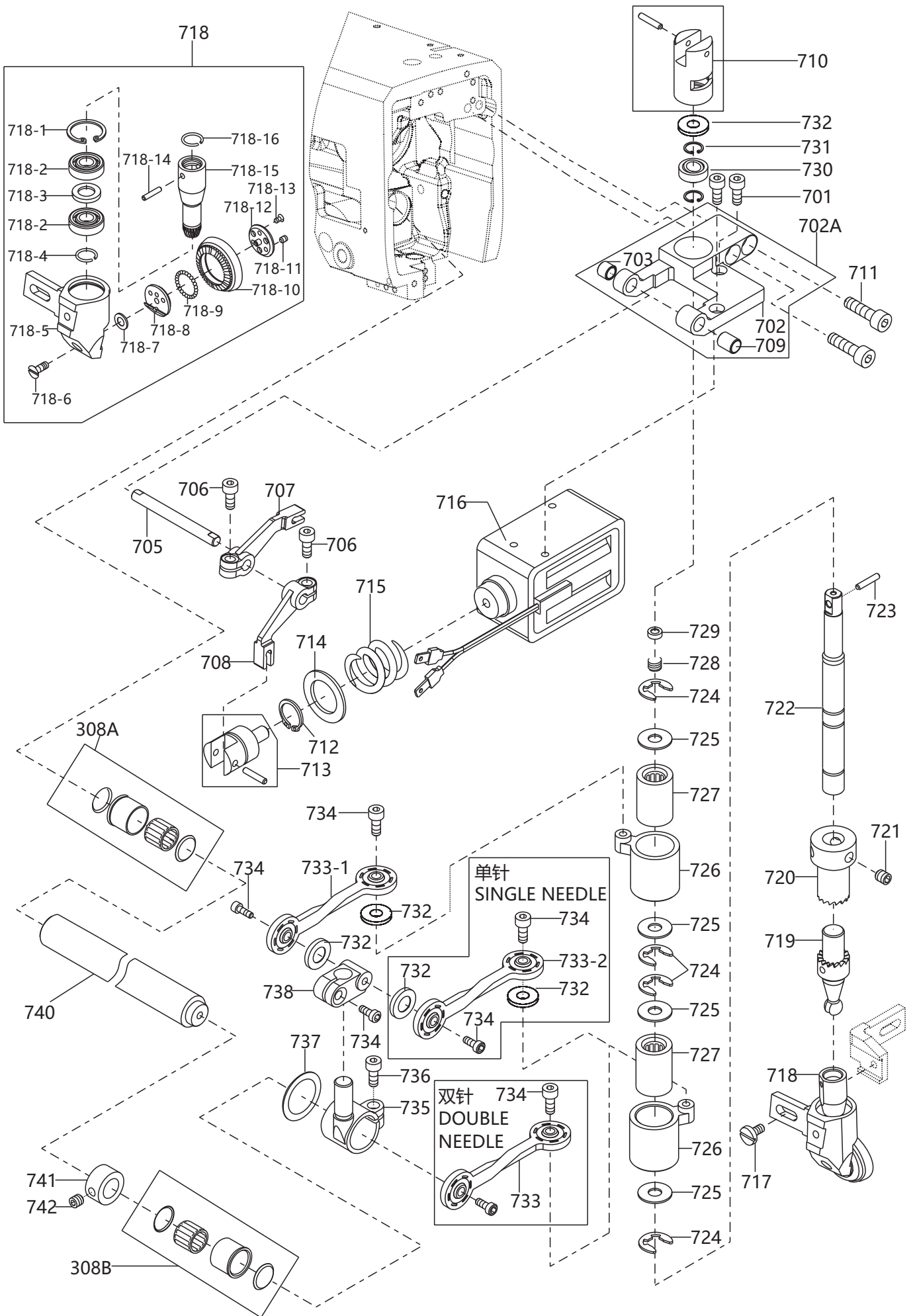
## 6、剪线机构 (短线头)

## Wire cutting mechanism (short thread head)

序号 No.	件号 Part No.	零部件名称 PartName	零件描述 Description	数量 Amt.		备注
				S5-91	S5-92	
649	155212048	剪线拉杆	Trimmig pull rod	1	0	
650	W01147	平垫圈M6	Flat washer M6	1	0	
651	155226004	摆杆销(短)	Pendulum pin	1	0	
652	H05912	开口挡圈5	E rings 5	1	0	
653	155327001	拉簧	Tension spring	1	0	
654	155226004	摆杆销(短)	Pendulum pin	1	0	
655	155205016	离合器臂	Clutch arm	1	0	
656	N01103	螺母M4	Nut M4	1	0	
657	W01145	平垫圈M4	Flat washer M4	1	0	
658	S10080	内六角凹端紧定螺钉M5x6	Screw pan M5x6	1	0	
659	155408007	隔套	Spacer bush	1	0	
660	155412004	钢球	Steel ball	1	0	
661	155426005	凸轮销A	Cam pin A	1	0	
662	155202007	离合器轴	Clutch shaft	1	0	
663	155209010	剪线座	Trimming seat	1	0	
664	S05959	内六角圆柱头螺钉M5x8	Screw pan M5x8	1	0	
665	S05957	内六角圆柱头螺钉M5x30	Screw pan M5x30	2	0	
666	155219015	定刀	Fixed knife	1	0	
667	155201040	刀座	Knife block	1	0	
668	155212049	刀座调整垫片	Gasket	1	0	
669	S01634	开槽盘头螺钉M2x3.5	Screw pan M2.5x3.5	2	0	
670	S05586	内六角圆柱头螺钉M4x20	Screw pan M4x20	1	0	
671	S05943	内六角圆柱头螺钉M4x10	Screw pan M4x10	1	0	
672	P01082	圆柱销3x8	Round pin 3x8	2	0	
673	1552NS10001	护线片螺钉	Screw	5	0	
674	155227068	夹线片	Shrapnel	1	0	
675	155227067	支撑片	Shrapnel	1	0	
676	1552NS13005	内六角圆柱头螺钉M2.5x5	Screw pan M2.5x5	2	0	
677	15520902	夹线弹片座	Shrapnel seat	1	0	
678	15523000600	剪线电磁铁组件	Trimming electromagnet assembly	1	0	
679	155212047	电磁铁固定板	Trimming electromagnet seat	1	0	
680	S12026	内六角沉头螺钉M4x6	Screw pan M4x6	2	0	
681	W01146	平垫圈M5	Flat washer M5	2	0	
682	S05951	内六角圆柱头螺钉M5x10	Screw pan M5x10	2	0	
683	155226005	拉簧销	Pin	1	0	
684	155212046	限位座固定板	Trimming limit plate	1	0	
685	155201039	剪线限位座	Trimming limit seat	1	0	
686	S05586	内六角圆柱头螺钉M4x20	Screw pan M4x20	1	0	
687	S05943	内六角圆柱头螺钉M4x10	Screw pan M4x10	1	0	
688	155203016	针摆调整套	Cover	1	0	

# 7、轮钱、上边心机构

## Roller presser foot & upper side shaft mechanism



## 7、轮钱、上边心机构

### Roller presser foot & upper side shaft mechanism

序号 No.	件号 Part No.	零部件名称 PartName	零件描述 Description	数量 Amt.		备注
				S5-91	S5-92	
308A	15512400100	培林套管组件(ø23)	Casing of bearing(ø23)	1	1	
308B	15512400200	培林套管组件(ø24)	Casing of bearing(ø24)	1	1	
701	S05949	内六角圆柱头螺钉M4×8	Screw pan M4×8	2	2	
702A	155201107	轮钱倒针座组件	Holder of backstitch asm	1	1	
705	155226007	固定销	Dowel pin	1	1	
706	S05951	内六角圆柱头螺钉M5×10	Screw pan M5×10	2	2	
707	155204009	离合器后摆杆	Clutch rear swing lever	1	1	
708	155204010	离合器前摆杆	Clutch front swing lever	1	1	
710	155209004	万向轴承座	Universal bearing holder	1	1	
711	S05242	内六角圆柱头螺钉M6×35	Screw pan M6×35	2	2	
712	H03068	轴用弹性挡圈16	Circlips for shaft 16	1	1	
713	155209005	摆杆连接块	Connecting block of swing bar	1	1	
714	155212022	垫片	Washer	1	1	
715	155227006	压簧	Compression spring	1	1	
716	15523000700	电磁铁(轮钱离合)	Backstitch solenoid valve	1	1	
717	1550NS11012	一字圆柱头螺钉	Slotted head screw	1	1	
718	15522500300	轮钱组件	Roller presser asm	1	1	
719	155225004	轮钱倒针下离合器	Lower clutch of backstitch	1	1	
720	155225005	轮钱倒针上离合器	Upper clutch of backstitch	1	1	
721	1550NS14001	内六角凹端紧定螺钉M6×0.75×6	Screw pan M6×0.75×6	2	2	
722	155202026	滚轮联接轴上节	Roller coupling shaft (upper)	1	1	
723	P03056	弹性销	Elastic pin 3×10	1	1	
724	H05913	开口挡圈8	E-type buckle 8	4	4	
725	155012011	调整垫片	Adjusting washer	4	4	
726	155203005	单向轴承座	One-way bearing holder	2	2	
727	155724002	滚针培林	Needle bearing	2	2	
728	155227010	压簧	Compression spring	1	1	
729	155212023	垫圈	Washer	1	1	
730	155024011	万向培林	Universal bearing	1	1	
731	155012013	C型扣环	C-shaped buckle	2	2	
732	155023003	油棉垫	Oil cotton pad	5	5	
733	155005005	万向连杆	Universal connecting rod	0	1	
733-1	155205002	万向连杆A	Universal connecting rod A	1	1	
733-2	155205003	万向连杆B	Universal connecting rod B	1	0	
734	S05943	内六角圆柱头螺钉M4×10	Screw pan M4×10	5	5	
735	155004005	万向连接头	Crank	1	1	
736	S05952	内六角圆柱头螺钉M5×12	Screw pan M5×12	1	1	
737	155012008	垫片	Washer	1	1	
738	155004007	万向连接座	Clamp	1	1	
740	155202009	上边心轴	Shaft	1	1	
741	155008001	固定环	Retaining ring	1	1	
742	1550NS14001	内六角凹端紧定螺钉M6×0.75×6	Screw pan M6×0.75×6	1	1	

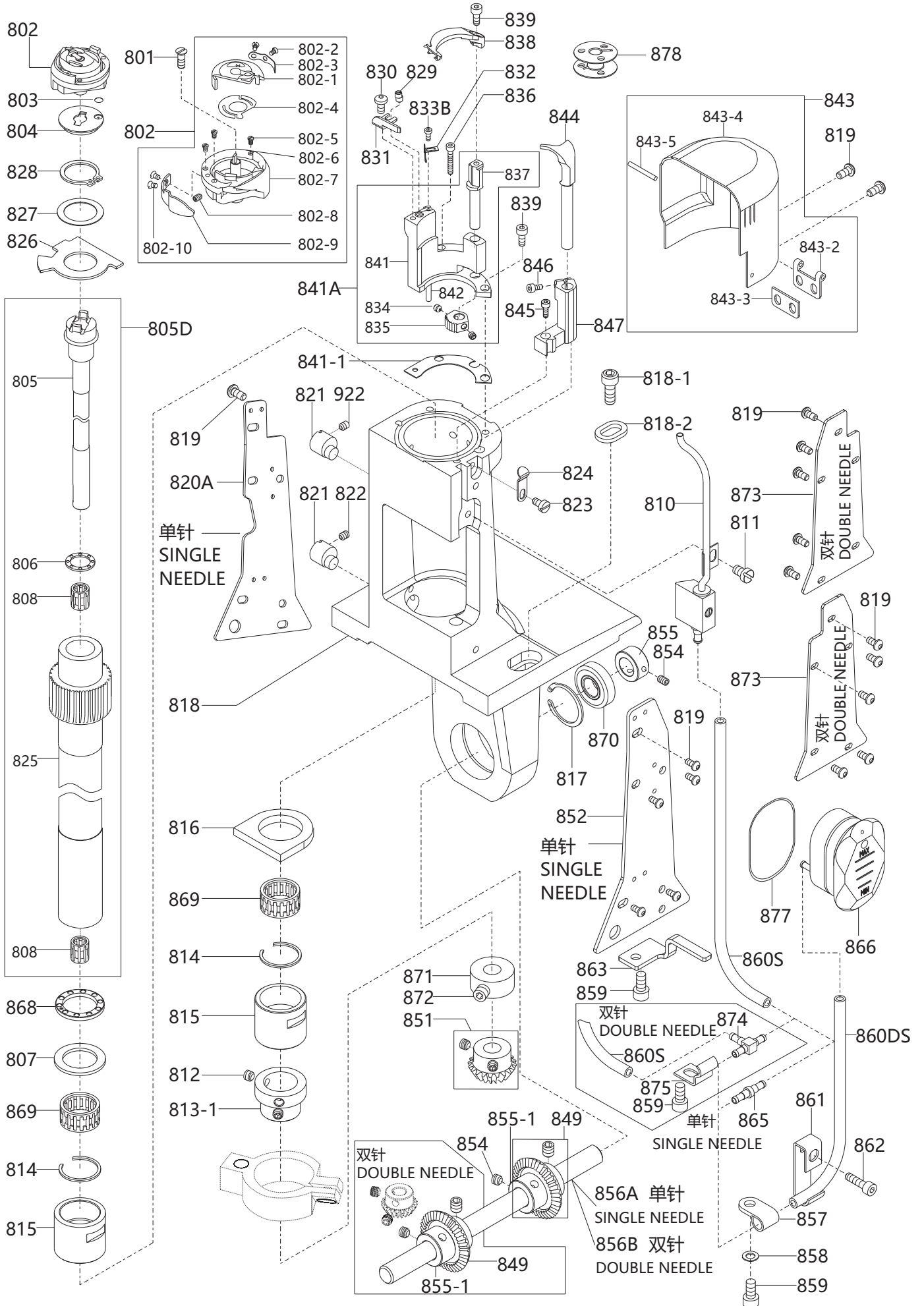
## 8、右边座机构

### Right side bracket mechanism

序号 No.	件号 Part No.	零部件名称 PartName	零件描述 Description	数量 Amt.		备注
				S5-91	S5-92	
801	1550NS11014	一字沉头螺钉	Screw pan	1	1	
802	15521800100	旋梭组件	Hook asm	1	1	
803	001154	O型圈	O-ring	1	1	
804	155209013	大釜护盖	Cauldron fender	1	1	
805D	15520201400	单针釜轴套管组件	Hook driver	1	1	
807	155228002	轴承垫片	Bearing gasket	1	1	
810	15522100200	油管(组件)	Tubing (asm)	1	1	
811	1550NS11013	一字圆柱头螺钉(薄)	Screw	1	1	
812	1550NS14001	内六角凹端紧定螺钉M6×0.75×6	Screw pan M6×0.75×6	2	2	
813-1	155208002	套管下紧圈	Running casing	1	1	
814	155229001	卡簧	Circlip	2	2	
815	155203009	斧轴套管	Axe shaft casing	2	2	
816	155223001	油棉垫	Oil cotton pad	1	1	
817	H01107	孔用弹性挡圈28	Circlips for hole 28	1	1	
818	930000057	右边座	Right side seat (spray paint)	1	1	喷漆
818-1	S05963	内六角圆柱头螺钉M6×20(镀镍)	Screw pan M6×20(Nickelpated)	2	2	



# 8、右边座机构 Right side bracket mechanism



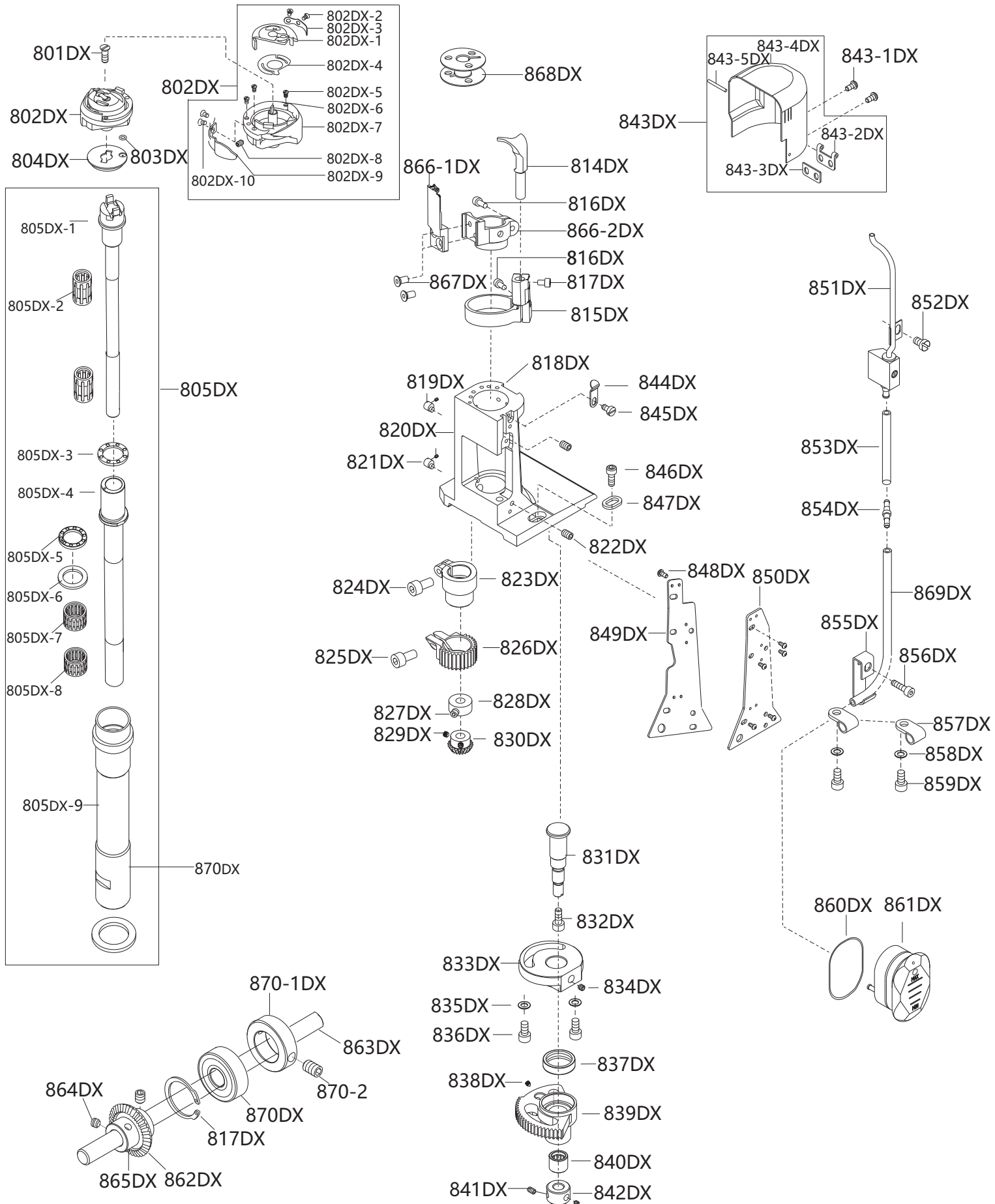
## 8、右边座机构

## Right side bracket mechanism

序号 No.	件号 Part No.	零部件名称 PartName	零件描述 Description	数量 Amt.		备注
				S5-91	S5-92	
818-2	155028002	垫片	Washer	2	2	
819	S17883	内六角平圆头螺钉M4×8(镀镍)	Screw pan M4×8(Nickelpated)	12	12	
820A	930000690	边盖板加缺口	Front side cover (spray paint)	1	0	喷漆
821	155026003	调整销	Adjustig pin	2	2	
822	S10076	内六角凹端紧定螺钉M4×6	Screw pan M4×6	2	2	
823	1552N511001	开槽圆柱头螺钉	Screw	1	1	
824	155212028	弹簧板	Spring plate	1	1	
826	155222001	橡皮垫	Rubber mat	1	1	
827	155228003	垫片	Washer	1	1	
828	H03069	轴用弹性挡圈20	Circlips for shaft 20	1	1	
829	155226008	调节销	Adjustig pin	1	1	
830	1557NS20001	定刀螺钉(进口)	Screw of fixed knife(Imported)	1	1	
831	155219001	定刀	Fixed knife	1	1	
832	155212029	弹片	Shrapnel	1	1	
833B	1557NS13003	夹线片螺钉(进口)	Screw of shrapnel (Imported)	1	1	
836	S05946	内六角圆柱头螺钉M4×25	Screw pan M4×25	1	1	
838	155219002	动刀	Moving knife	1	1	
839	S05943	内六角圆柱头螺钉M4×10	Screw pan M4×10	2	2	
841A	15520101900	刀座组件	Tool holder assembly	1	1	
841-1	155212030	刀座垫片	Gasket of Tool holder	1	1	
843	15521203100	大釜盖组件	Post cap	1	1	
844	155202015	角	Rotating hook opener	1	1	
845	S05944	内六角圆柱头螺钉M4×12	Screw pan M4×12	1	1	
846	S05949	内六角圆柱头螺钉M4×8	Screw pan M4×8	1	1	
847	155209014	角固定座	Rotating hook opener bracket	1	1	
849	155025003	大齿轮	Bevel gear(large)	1	2	
851	155025004	小齿轮	Bevel gear(small)	1	1	
852	930000059	后边盖板	Back side cover (spray paint)	1	0	喷漆
854	1550NS14001	内六角凹端紧定螺钉M6×0.75×6	Screw pan M6×0.75×6	4	6	
855	155208005	定环	Fixed ring	1	1	
855-1	155008006	定环	Fixed ring	1	2	
856A	155202016	万向连接轴	Universal connecting shaft	1	0	
856B	155202017	万向连接轴	Universal connecting shaft	0	1	
857	155211010	油管护架	Tubing guard	1	1	
858	W01145	平垫圈M4	Flat washer M4	1	1	
859	S05949	内六角圆柱头螺钉M4×8	Screw pan M4×8	2	3	
860DS	155221006	油管(600mm)	Tubing (600mm)	1	1	
860S	155221001	油管	Tubing	1	2	
861	155212033	线卡	Ply-yard drill	1	1	
862	S05945	内六角圆柱头螺钉M4×16	Screw pan M4×16	1	1	
863	155212034	护线架	Thread guard	1	1	
865	155236001	油管接头	The tubing connector	1	0	
866	155211011	油镜	Oil mirror	1	1	
868	155224013	平面轴承	Plane bearing	1	1	
869	155224014	滚针培林	Needle bearing	2	2	
870	B01046	滚珠培林(6001-2RZ/Z2)	Ball bearing(6001-2RZ/Z2)	1	1	
871	155208006	定环	Stationary ring	1	1	
872	S09174	内六角平端紧定螺钉M6×0.75×4	Screw pan M6×0.75×4	2	2	
873	930000060	双针边盖板	Side cover (Double needle)	0	2	喷漆
874	155236002	油管接头	Oil pipe(tee joint)	0	1	
875	155212036	线卡	Ply-yard drill	0	1	
877	O01148	O型圈	O-ring 32×1	1	1	
878	155231011	梭仔子(铝件/孔)	Saucer (aluminum/hole)	1	0	

## 8、右边座机构(短线头)

Right side bracket mechanism(short thread head)



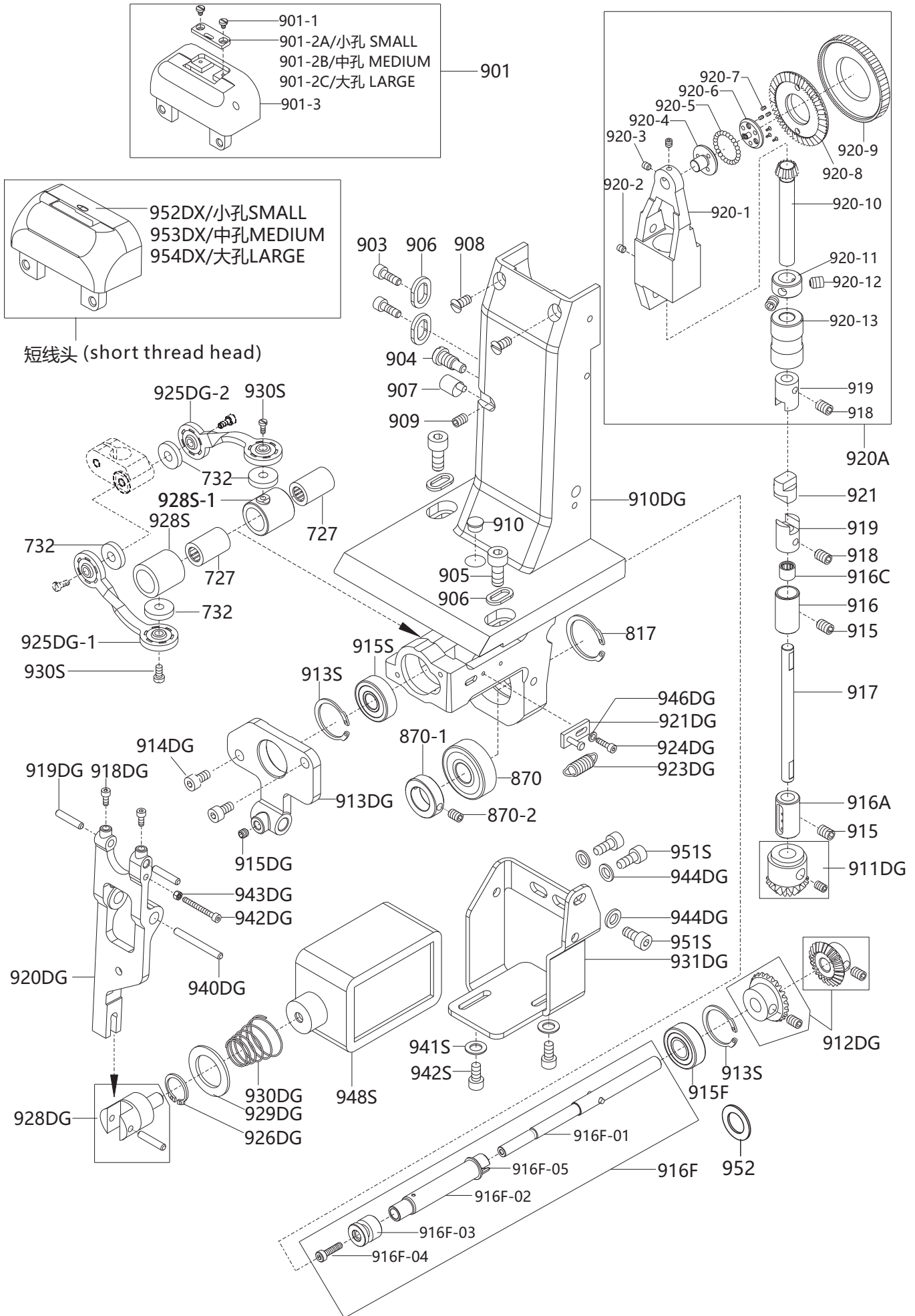
## 8、右边座机构(短线头)

## Right side bracket mechanism(short thread head)

序号 No.	件号 Part No.	零部件名称 PartName	零件描述 Description	数量 Amt.		备注
				S5-91	S5-92	
801DX	1550NS11014	一字螺钉	Screw pan	1	0	
802DX	15581800100	旋梭组件(国产)	Hook asm	1	0	
803DX	001154	O型圈	O-ring	1	0	
804DX	155209013	大釜护盖	Cauldron fender	1	0	
805DX	15520203900	单针釜轴套管组件	Hook driver	1	0	
814DX	155202038	角	Rotating hook opener	1	0	
815DX	155209026	角固定座	Rotating hook opener bracket	1	0	
816DX	S05943	内六角圆柱头螺钉M4×10	Screw pan M4×10	2	0	
817DX	1553NS11002	内六角圆柱头螺钉M4×8	Axe shaft casing	1	0	
818DX	930000617	单针边座(喷漆)	Right side seat (spray paint)	1	0	
819DX	155026003	调整销	Adjustig pin	1	0	
820DX	S10076	内六角凹端紧定螺钉M4×6	Screw pan M4×6	2	0	
821DX	155226033	调整销	Adjustig pin	1	0	
822DX	S10080	六角凹端紧定螺钉M5×6	Screw pan M5×6	2	0	
823DX	155408006	釜轴下锁圈	Running casing	1	0	
824DX	S05943	内六角圆柱头螺钉M4×10	Screw pan M4×10	1	0	
826DX	155225014	剪线小齿轮	Trimming pinion	1	0	
827DX	S09174	内六角平端紧定螺钉M6×0.75×4	Screw pan M6×0.75×4	1	0	
828DX	155008007	定环	Fixed ring	1	0	
830DX	155025004	小齿轮	Bevel gear(small)	1	0	
831DX	155202037	剪线齿轮轴	Trimming gear shaft	1	0	
832DX	S05940	内六角圆柱头螺钉M3×5	Screw pan M3×5	1	0	
833DX	155201038	齿轴调整座	Adjustig seat	1	0	
834DX	S10080	内六角凹端紧定螺钉M5×6	Screw pan M5×6	1	0	
835DX	W01146	平垫圈5	Flat washer M5	2	0	
836DX	S05952	内六角圆柱头螺钉M5×12	Screw pan M5×12	1	0	
837DX	B01047	滚珠轴承6800-ZZ	Ball bearing(6800-ZZ)	1	0	
838DX	S10074	内六角凹端紧定螺钉M4×4	Screw pan M4×4	1	0	
839DX	155225013	剪线大齿轮	Trimming main gear	1	0	
840DX	155224015	滚针轴承(HK0709)	Needle bearing(HK0709)	1	0	
842DX	155208001	锁圈	Casing	1	0	
843DX	15521203100	大釜盖组件	Post cap	1	0	
843-1DX	S17883	内六角平圆头螺钉M4×8(镀镍)	Screw pan M4×8(Nickelpated)	2	0	
844DX	155212028	弹簧板	Spring plate	1	0	
845DX	1550NS11001	一字圆柱头螺丝	Screw	1	0	
846DX	S05963	内六角圆柱头螺钉M6×20(镀镍)	Screw pan M6×20(Nickelpated)	2	0	
847DX	155028002	垫片	Washer	2	0	
848DX	S17883	内六角平圆头螺钉M4×8(镀镍)	Screw pan M4×8(Nickelpated)	10	0	
849DX	930000690	边盖板加缺口	Front side cover(Painting)	1	0	
850DX	930000059	后边盖板	Back side cover (spray paint)	1	0	
851DX	15522101900	油管组件	Tubing (asm)	1	0	
852DX	1550NS11013	一字圆柱头螺丝	Screw	1	0	
853DX	155221006	油管(600mm)	Tubing (600mm)	1	0	
854DX	155236001	油管接头	The tubing connector	1	0	
855DX	155212033	线卡	Ply-yard drill	1	0	
856DX	S05945	内六角圆柱头螺钉M4×16	Screw pan M4×16	1	0	
857DX	155211010	油管护架	Tubing guard	2	0	
858DX	W01145	平垫圈M4	Flat washer M4	2	0	
859DX	S05949	内六角圆柱头螺钉M4×8	Screw pan M4×8	2	0	
860DX	001148	O型圈32×1	O-ring 32×1	1	0	
861DX	155211011	油镜	Oil mirror	1	0	
862DX	155025003	大齿轮	Bevel gear(small)	1	0	
863DX	155202016	万向连接轴(短)	Universal connecting shaft	1	0	
864DX	1550NS14001	内六角凹端紧定螺钉M6×0.75×6	Screw pan M6×0.75×6	2	0	
865DX	155008006	定环	Fixed ring	1	0	
866-1X	155219003	动刀	Moving knife	1	0	
866-2X	155201042	动刀支架	Moving knife bracket	1	0	
867DX	S12027	内六角沉头螺钉M4×8	Screw pan M4×8	2	0	
868DX	155231011	梭仔子(铝件/孔)	Saucer (aluminum/hole)	1	0	
869DX	155221001	油管	Tubing	1	0	
870DX	155203017	釜轴套管	Kettle shaft sleeve	1	0	

# 9、单针中座及下倒缝机构

## Single needle central bracket mechanism



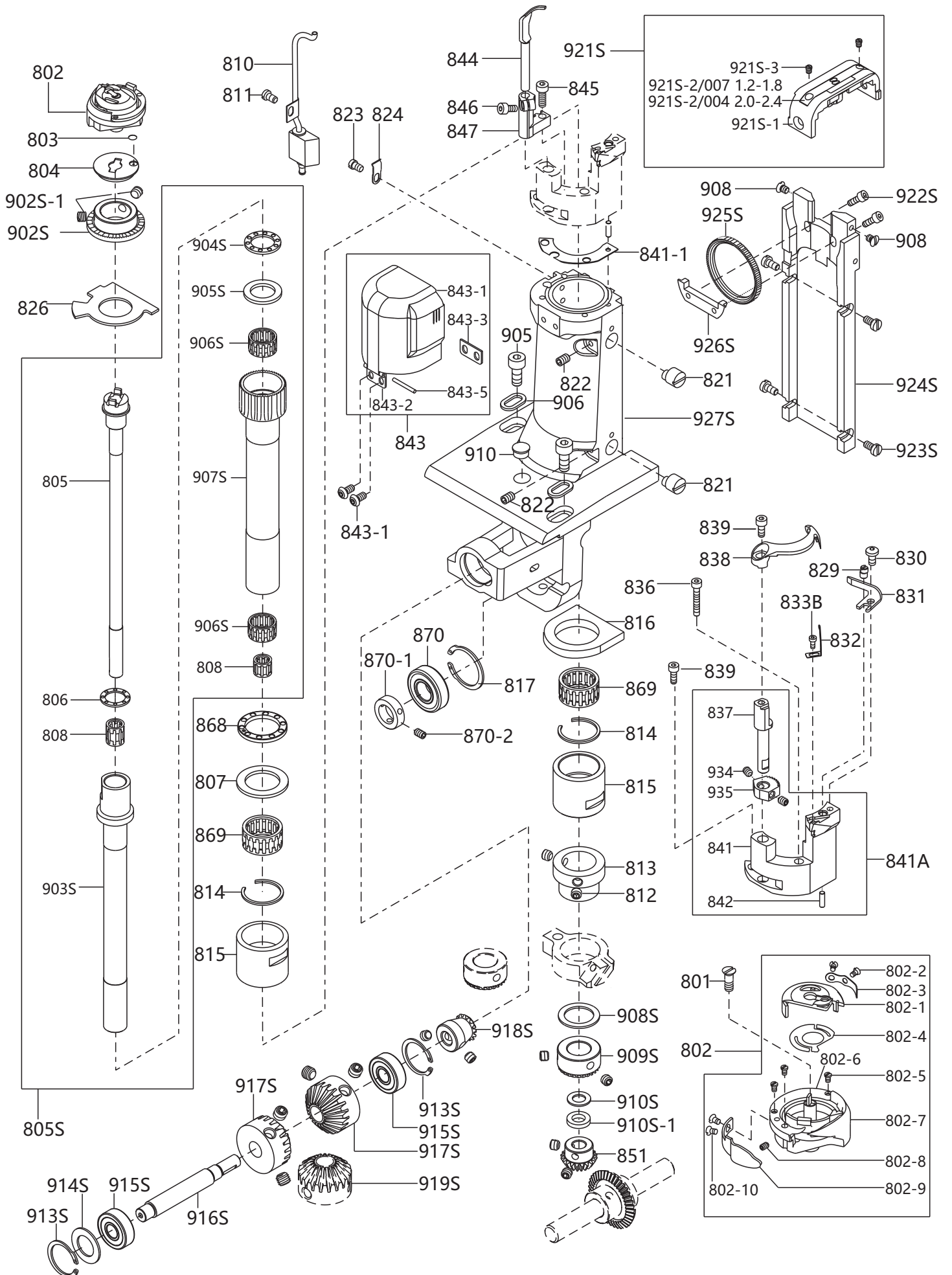
## 9、单针中座及下倒缝机构

## Single needle central bracket mechanism

序号 No.	件号 Part No.	零部件名称 PartName	零件描述 Description	数量 Amt.		备注
				S5-91	S5-92	
727	155724002	滚针培林 进口	Needle bearing	2	0	
732	155023003	油棉垫	Oil cotton pad	4	0	
817	H01107	孔用弹性挡圈28	Circlips for hole 28	1	0	
870	B01046	滚珠培林(6001-2RZ/Z2)	Ball bearing(6001-2RZ/Z2)	1	0	
870-1	155208007	定环	Stationary ring	1	0	
870-2	S10075	内六角凹端紧定螺钉M4×5	Screw pan M4×5	2	0	
901	15521500100	单针针板(带孔)	Throat plate	1	0	
903	S05952	内六角圆柱头螺钉M5×12	Screw pan M5×12	2	0	
904	1550N511015	一字圆柱头螺钉	Screw	1	0	
905	S05963	内六角圆柱头螺钉M6×20(镀镍)	Screw pan M6×20(Nickelpated)	2	0	
906	155028002	垫片	Washer	4	0	
907	155026005	调整销	Adjustig pin	1	0	
908	1557N517001	针板座螺钉(进口)	Screw(Imported)	2	0	
909	S10077	内六角凹端紧定螺钉M4×8	Screw pan M4×8	1	0	
910	155211003	油盖	Rubber plug	1	0	
910DG	930000368	单针中座	Support plate	1	0	喷漆
911DG	155725001	中座小齿轮	Bevel gear	1	0	
912DG	155725002	中座大齿轮	Bevel gear	2	0	
913DG	155704003	摆杆座	Swing rod seat	1	0	
914DG	S05943	内六角圆柱头螺钉M4×10	Screw pan M4×10	2	0	
915DG	S10076	内六角凹端紧定螺钉M4×6	Screw pan M4×6	1	0	
916F	15572400300	单向培林轴组件	Unidirectional pellinx assembly	1	0	
918DG	S05940	内六角圆柱头螺钉M3×5	Screw pan M3×5	2	0	
919DG	P01082	圆柱销3×8	Cylindrical pin 3×8	2	0	
920DG	155704002	下倒缝摆杆	Lower back seam swing bar	1	0	
921DG	155704004	拉簧固定座	Spring fixing plate	1	0	
923DG	155727001	拉簧	Tension spring	1	0	
924DG	S05942	内六角圆柱头螺钉M3×8	Screw pan M3×8	1	0	
925DG-1	155205002	万向连杆A	Universal connecting rod A	1	0	
925DG-2	155205003	万向连杆B	Universal connecting rod B	1	0	
926DG	H03068	轴用弹性挡圈16	Circlips for shaft 16	1	0	
928DG	155209005	摆杆连接块	Connecting block of swing bar	1	0	
929DG	155212022	垫片	Washer	1	0	
930DG	155727002	锥形弹簧	Conical spring	1	0	
931DG	155712003	电磁铁固定板	Electromagnet fixed plate	1	0	
940DG	155726001	圆柱销	Cylindrical pin	1	0	
942DG	S05991	内六角圆柱头螺钉M3×20	Screw pan M3×20	1	0	
943DG	N01105	六角螺母M3	Nut M3	1	0	
944DG	W01146	平垫圈M5	Flat washer M5	1	0	
946DG	W01144	平垫圈M3	Flat washer M3	1	0	
915	S10075	内六角凹端紧定螺钉M4×5	Screw pan M4×5	2	0	
916	155203010	套管	Casing	1	0	
916A	155003009	下套管	Running casing	1	0	
916C	155224015	滚针培林	Needle bearing	1	0	
917	155002005	中座轴	Shaft	1	0	
918	S10078	内六角凹端紧定螺钉M5×4	Screw pan M5×4	2	0	
919	155009009	轴连接器	Shaft connector	1	0	
920A	15500900900	单针送金组件	Single needle feeding component	1	0	
921	155011005	塑料接头	Plastic connector	1	0	
913S	155012014	C型扣环	C-shaped buckle	2	0	
915S	B01074	轴承608ZZ	Bearing 608ZZ	1	0	
915F	B04094	轴承6900-ZZ	Bearing 6900-ZZ	1	0	
928S	155224016	单向轴承座	One-way bearing holder NA/SK	1	0	
928S-1	155703010	单向轴承座	One-way bearing holder /NA	1	0	
930S	1557N511001	一字圆柱头螺钉(短)	Screw pan	2	0	
941S	W01145	平垫圈M4	Flat washer M4	2	0	
942S	1552N513055	内六角圆柱头螺钉M4×8	Screw pan M4×8	2	0	
948S	15523000300	下倒缝电磁铁	Needle pendulum electromagnet	1	0	
951S	S05951	内六角圆柱头螺钉M5×10	Screw pan M5×10	3	0	
952	155228006	调整垫片	Adjusting washer	1	0	
952DX	155215053	单针针板(小孔)(短线头)	Throat plate(small)(short thread head)	1	0	
953DX	155215012	单针针板(中孔)(短线头)	Throat plate(medium)(short thread head)	1	0	
954DX	155215034	单针针板(大孔)(短线头)	Throat plate(large)(short thread head)	1	0	

# 10、双针左边座及中座机构

## Double needle left seat and middle seat mechanism



## 10、双针左边座及中座机构

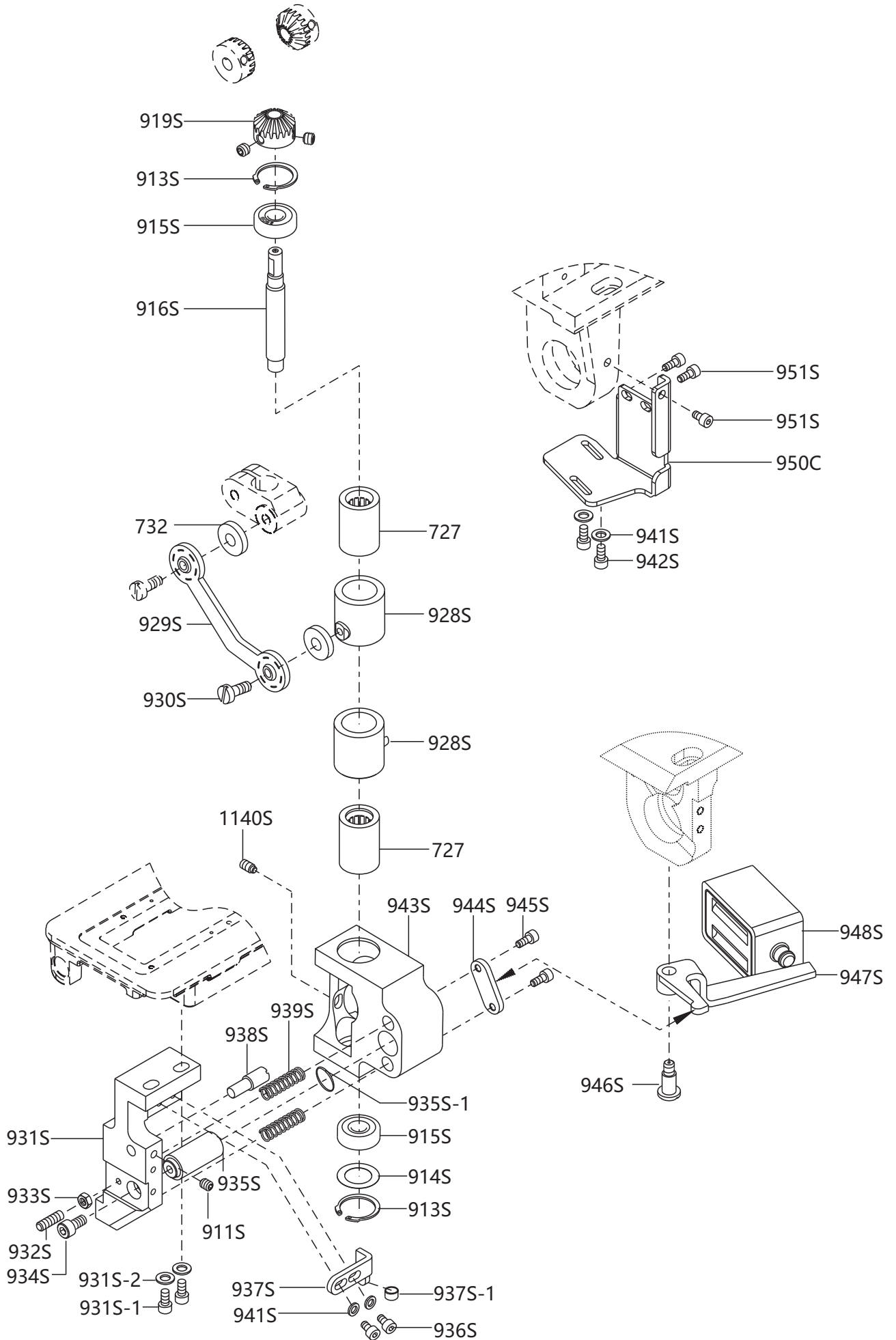
## Double needle left seat and middle seat mechanism

序号 No.	件号Part No.	零部件名称 PartName	零件描述 Description	数量 Amt.		备注
				S5-91	S5-92	
801	1550NS11014	一字沉头螺钉	Screw pan	1	1	
802	15521800100	旋梭组件	Hook asm	1	1	
803	001154	O型圈	O-ring	1	1	
804	155209013	大釜护盖	Cauldron fender	0	1	
805S	15530200100	双针釜轴套管组件	Hook driver(Double needle)	0	1	
807	155228002	轴承垫片	Bearing gasket	0	1	
810	15522100200	油管(组件)	Tubing (asm)	0	1	
811	1550NS11013	一字圆柱头螺钉(薄)	Screw	0	1	
812	1550NS14001	内六角凹端紧定螺钉M6×0.75×6	Screw pan M6×0.75×6	0	2	
813-1	155208002	套管下紧圈	Running casing	0	1	
814	155229001	卡簧	Circlip	0	2	
815	155203009	斧轴套管	Axe shaft casing	0	2	
816	155223001	油棉垫	Oil cotton pad	0	1	
817	H01107	孔用弹性挡圈28	Circlips for hole 28	0	1	
821	155026003	调整销	Adjustig pin	0	2	
822	S10076	内六角凹端紧定螺钉M4×6	Screw pan M4×6	0	2	
823	1552NS11001	开槽圆柱头螺钉	Screw	0	1	
824	155212028	弹簧板	Spring plate	0	1	
826	155222001	橡皮垫	Rubber mat	0	1	
829	155226008	调节销	Adjustig pin	0	1	
830	1557NS20001	定刀螺钉(进口)	Screw of fixed knife(Imported)	0	1	
831	155219001	定刀	Fixed knife	0	1	
832	155212029	弹片	Shrapnel	0	1	
833B	1557NS13003	夹线片螺钉(进口)	Screw of shrapnel (Imported)	0	1	
836	S05946	内六角圆柱头螺钉M4×25	Screw pan M4×25	0	1	
838	155219002	动刀	Moving knife	0	1	
839	S05943	内六角圆柱头螺钉M4×10	Screw pan M4×10	0	2	
841A	15520101900	刀座组件	Tool holder assembly	0	1	
841-1	155212030	刀座垫片	Gasket of Tool holder	0	1	
843	15521203100	大釜盖组件	Post cap	0	1	
843-1	S17883	内六角平圆头螺钉M4×8(镀镍)	Screw pan M4×8(Nickelpated)	0	2	
844	155202015	角	Rotating hook opener	0	1	
845	S05944	内六角圆柱头螺钉M4×12	Screw pan M4×12	0	1	
846	S05992	内六角圆柱头螺钉M4×6	Screw pan M4×6	0	1	
847	155209014	角固定座	Rotating hook opener bracket	0	1	
851	155025004	小齿轮	Bevel gear(small)	0	1	
868	155224013	平面轴承	Plane bearing	0	1	
869	155224014	滚针轴承	Needle bearing	0	2	
870	B01046	滚珠培林(6001-2RZ/Z2)	Ball bearing(6001-2RZ/Z2)	0	1	
870-1	155208007	定环	Stationary ring	0	1	
870-2	S10075	内六角凹端紧定螺钉M4×5	Screw pan M4×5	0	2	
902S	155225009	送料平面齿轮	Feeding plane wheel	0	1	
902S-1	S09174	内六角平端紧定螺钉M6×0.75×4	Screw pan M6×0.75×4	0	2	
905	S05963	内六角圆柱头螺钉M6×20(镀镍)	Screw pan M6×20(Nickelpated)	0	2	
906	155028002	垫片	Washer	0	2	
908	1557NS17001	针板座螺钉(进口)	Screw(Imported)	0	2	
908S	155228007	调整垫片	Adjusting washer	0	1	
909S	155225010	送料大齿轮	Big gear	0	1	
910	155211003	油盖	Rubber plug	0	1	
910S	155128001	调整垫片	Adjusting washer	0	2	
910S-1	155228008	垫片	Washer	0	1	
913S	155012014	C型扣环	C-shaped buckle	0	2	
914S	155228006	调整垫片	Adjusting washer	0	2	
915S	B01074	轴承608ZZ	Bearing 608ZZ	0	2	
916S	155002006	轴承轴	Silvicultural axis	0	1	
917S	155225006	锥形齿轮	Bevel gear	0	2	
918S	155225011	送料齿轮	Gear	0	1	
921S	15531500200	双针针板组件(1.2-1.8F)	Double needle throat plate(1.2-1.8F)	0	1	
922S	S05943	内六角圆柱头螺钉M4×10	Screw pan M4×10	0	2	
923S	1553NS11002	开槽圆柱头螺钉	Screw	0	4	
924S	155301001	双针中座	Support plate(Double needle)	0	1	
925S	155225012	送料齿轮	Gear	0	1	
926S	155209021	送料轮固定板	Fixing plate	0	1	
927S	930000062	双针左边座	Double needle left side seat	0	1	喷漆



# 11、双针倒针机构

## Double needle reverse stitching mechanism

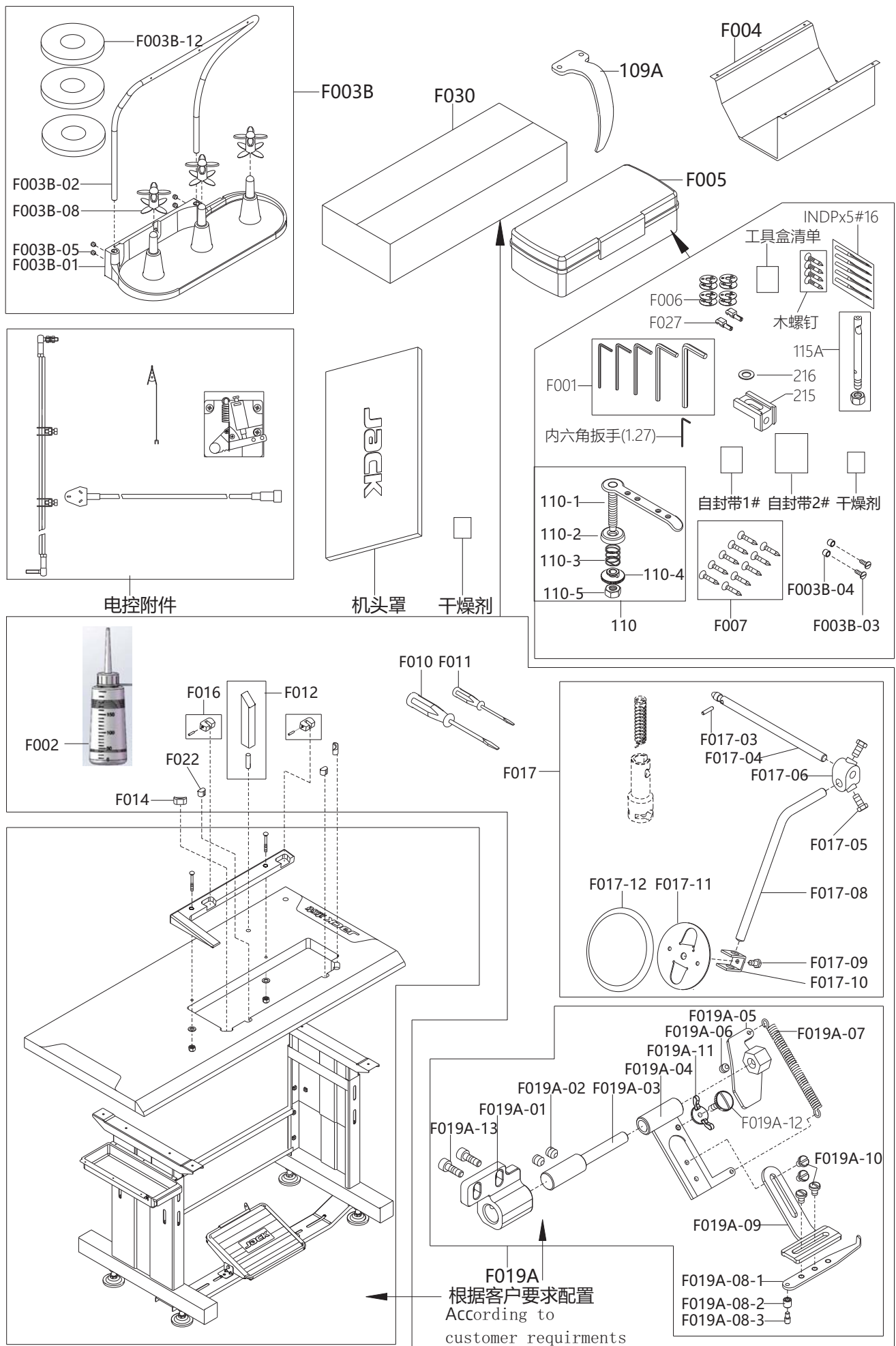


## 11、双针倒针机构

## Double needle reverse stitching mechanism

序号 No.	件号 Part No.	零部件名称 PartName	零件描述 Description	数量 Amt.	
				S5-91	S5-92
727	155724002	滚针培林进口	Needle bearing	0	2
732	155023003	油棉垫	Oil cotton pad	0	2
911S	S10080	内六角凹端紧定螺钉M5×6	Screw pan M5×6	0	1
913S	155012014	C型扣环	C-shaped buckle	0	2
914S	155228006	调整垫片	Adjusting washer	0	2
915S	155024012	轴承608ZZ	Bearing 608ZZ	0	2
916S	155002006	轴承轴	Silvicultural axis	0	1
919S	155225007	锥形齿轮	Bevel gear	0	1
928S	155224016	单向轴承座	One-way bearing holder NA/SK	0	2
929S	155205007	万向连杆A	Universal connecting rod	0	1
930S	1557NS11001	一字圆柱头螺钉(短)	Screw pan	0	1
931S	155201024	倒针座	Inverted needle seat	0	1
931S-1	S05240	内六角圆柱头螺钉M6×20	Screw pan M6×20	0	2
931S-2	W01147	平垫圈M6	Flat washer M6	0	2
932S	S10073	内六角凹端紧定螺钉M4×16	Screw pan M4×16	0	1
933S	N01103	六角螺母M4	Nut M4	0	1
934S	S05951	内六角圆柱头螺钉M5×10	Screw pan M5×10	0	1
935S	155226011	滑动销	Pin	0	1
935S-1	O01155	O型圈	O-ring	0	1
936S	S05943	内六角圆柱头螺钉M4×10	Screw pan M4×10	0	2
937S	155212039	滑块限位座	Restricted seat	0	1
937S-1	155221007	滑块限位座减震套	Buffer sleeve of restricted seat	0	1
938S	155226012	调节销	Adjustig pin	0	1
939S	155227017	压簧	Compression spring	0	2
940S	1550NS20001	开槽无头轴位螺钉	Screw	0	1
941S	W01145	平垫圈M4	Flat washer M4	0	4
942S	S05949	内六角圆柱头螺钉	Screw pan M4×8	0	2
943S	155209017	倒针滑块	Sliding block	0	1
944S	155209006	顶杆挡块	Block	0	1
945S	S05942	内六角圆柱头螺钉M3×8	Screw pan M3×8	0	2
946S	155220001	螺钉	Screw	0	1
947S	155212040	顶杆	Knock-out pin	0	1
948S	15523000300	下倒缝电磁铁	Electromagnet	0	1
950C	155212037	下倒针电磁铁座	Electromagnet fixed plate	0	1
951S	S05951	内六角圆柱头螺钉M5×10	Screw pan M5×10	0	3

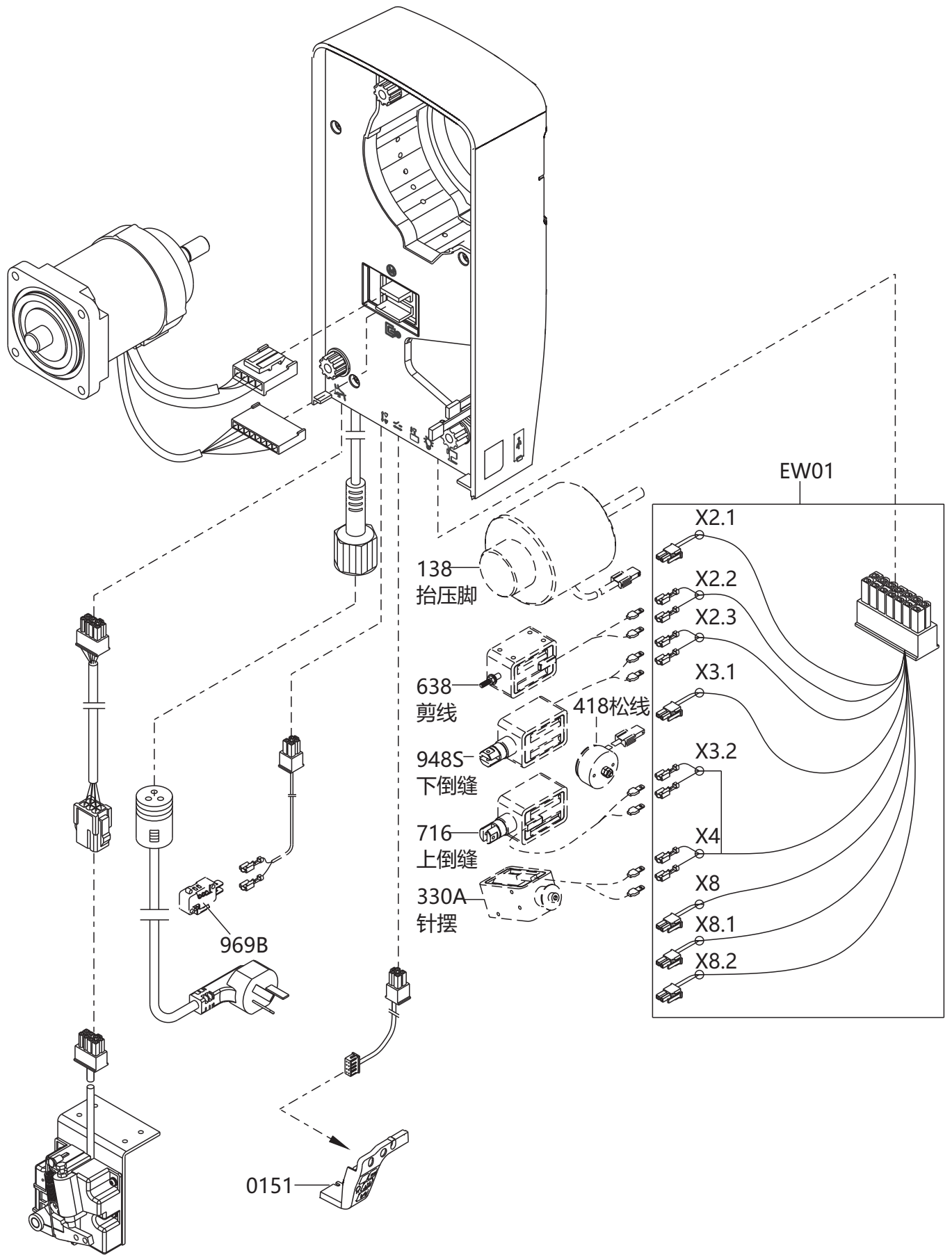
# 12、随机附件 Accessories



## 12、随机附件 Accessories

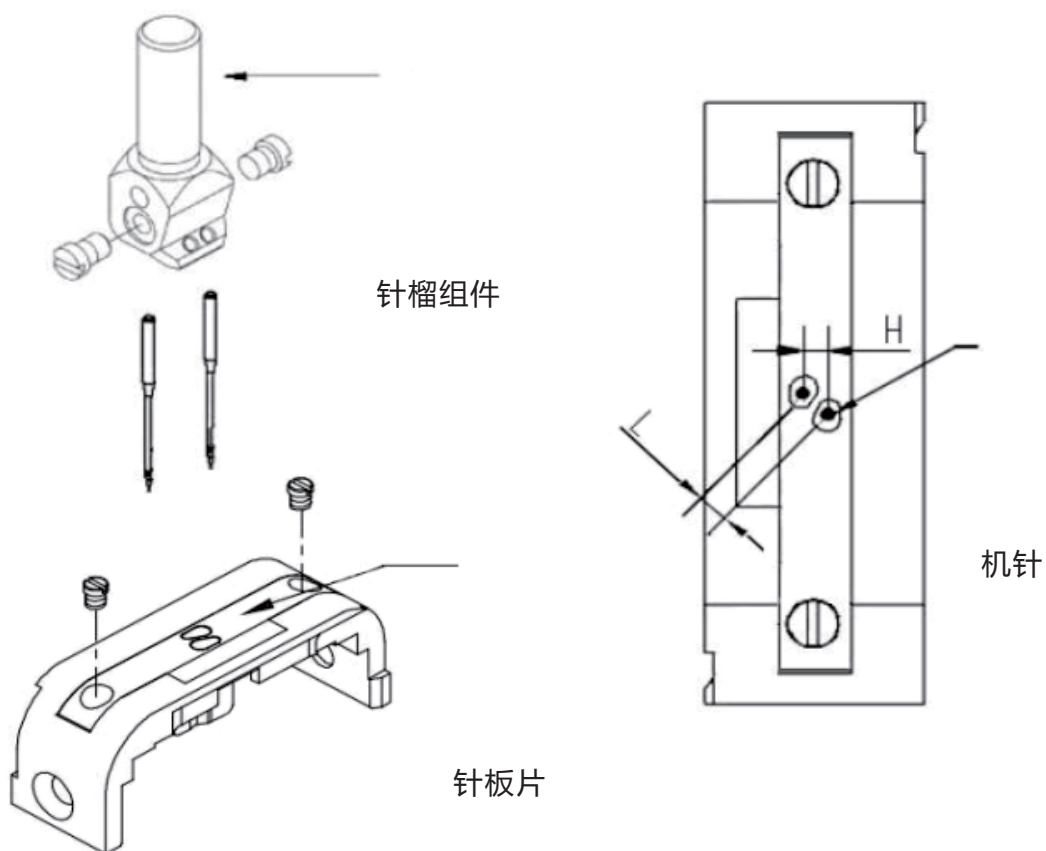
序号 No.	件号 Part No.	零部件名称 PartName	零件描述 Description	数量 Amt.		备注
				S5-91	2	
109A	155211002	挑线杆防护罩	Thread takeup lever cover	1	1	
110	155213004	绕线夹线器组件	Bobbin thread tension asm	1	1	
115A	15521300500	穿线杆组件(含螺母)	Spool pin asm	1	1	
215	155009002	顶针座	Thimble seat	1	0	
346	155217001	机针(INDP×5#16)	Needle INDP×5#16	5	10	
F001	155031001	内六角扳手(2mm)	Allen key (2mm)	1	1	
	155031002	内六角扳手(2.5mm)	Allen key (2.5mm)	1	1	
	155031003	内六角扳手(3mm)	Allen key (3mm)	1	1	
	155031004	内六角扳(4mm)	Allen key (4mm)	1	1	
	155031005	内六角扳手(5mm)	Allen key (5mm)	1	1	
	155231090	内六角扳手(1.27mm)	Allen key (1.27mm)	1	1	
F002	11631008	油壶组件	Horizontal mouth oil pot	1	1	
F003B-01	155231016	线架盘	Thread stand rack	1	1	
F003B-02	155231028	线架	Thread stand	1	1	
F003B-03	1552NS11004	线架盘螺钉	Screw of thread stand rack	2	2	
F003B-04	155231006	尼龙挡圈	Nylon retaining ring	2	2	
F003B-08	155231017	支撑芯	Stand rod	3	3	
F003B-12	155231027	线盘垫	Spongy cushion	3	3	
F004	155231009	油盘	Oil pan	1	1	
F006	155231011	梭子	Shuttle	4	6	
F007	1552NS10099	圆钢钉8分	Round steel nail	10	10	
	155231033	9608-F001PE袋	Self sealing bag1#	1	1	
	155231040	条形码标签	Barcode label	2	2	
	S19018	沉头木螺钉4×16	Countersunk head wood screw 4 × 16	10	10	
	155231041	挂牌绳卡(挂合格证用)	Hanging rope card	1	1	
	20131159	合格证	Certificate	1	1	
F010	155031007	螺钉刀(中)	Screwdriver (middle)	1	1	
F011	155031006	螺钉刀(小)	Screwdriver (small)	1	1	
F012	155232023	枕木组件	Sleeper component	1	1	
F014	155031011	橡胶垫	Rubber mat	2	2	
F016	155231012	后纽扣橡胶垫	Rubber mat of rear button	2	2	
F017	155231013	脚弓组	Ankle arch group	1	1	
F019A	155231014	靠边组件	Edge assembly	1	1	
F022	155231015	橡胶垫	Rubber mat	2	2	
F027	155031013	后纽扣	Rear button	2	2	
F030	155231001	附件纸箱	Accessory box	1	1	
	155531004	附件纸板(L型板)	Accessory carton	1	1	
	155231024	机头罩	Nose covering	1	1	
	155231029	木螺钉	Wood screw	4	4	
	155231021	罗拉车纸箱	Roller carton	1	1	
	15523100700	机身泡沫组件	Foam for machine	1	1	
	155731012	S5说明书	Manual book & parts book	1	1	
	155231005	电控附件	Electric control accessories	1	1	

13、电器连接图  
Electricity elements fig



# 14、双针针位组明细

## Double needle position group details



机针间距 H	机针Needle	针板片 Needle plate	针榴组件 Needle holder	
			标配 Standard	选配 Apolegamic
1.2-1.8	155217001(#16)	(1.2-1.8)155315016	(2.4)15531700300	(2.8)15531700400
2.0-2.4	155217001(#16)	(2.0-2.4)155315007	(2.4)15531700300	(3.2)15531700100
2.8-3.2	155317007(#21)	(2.8-3.2)155315008	(3.6)15531700500	针板组件(特殊配置)

14、S5/S7装箱清单  
S5/S7 packing list

序号 No.	零部件名称 PartName	零件描述 Description	数量 Amt.	
			S5-91	S5-92
01	机头	Machine head	1	1
02	机头塑料罩	Machine plastic bag	1	1
03	机头泡沫组件	Machine Foam	1	1
04	机头罩	PE Cover	1	1
05 (附件纸 箱 Accessory parton)	油壶	Oiler	1	1
	线盘垫	Spongy cushion	3	3
	支撑芯	Stand rod	3	3
	枕柱	Stand Baer	1	1
	螺丝刀(小)	Screw Driver (Small)	1	1
	螺丝刀(中)	Screw Driver (Medium)	1	1
	脚弓组	Knee Lifter Assy	1	1
	后扣座	Rubber Hinge	2	2
	橡胶垫(大)	Rubber Cushion (Large)	2	2
	橡胶垫(小)	Rubber Cushion(Small)	2	2
	靠边组件	Edge Guide	1	1
	天秤盖	Thread Take-up Lever Cover	1	1
06	油槽	Oil Pan	1	1
07	电控说明书		1	1
08	整机说明书	Machine Manual	1	1
09	开关线	Switch line	1	1
10	脚踏控制器	Pedal	1	1
11	纸板	Paper	1	1
12	拉杆	Connect rod	1	1
13	梭子		4	6
	针 (INDPx5) 根据产品要求放置	Needle (INDPx5)Place based on product requirement	5	10
	过线柱	Spool Pin	1	1
	过线器	Thread Guide Wire	1	1
	铁钉	Nail	10	10
	螺钉 M4x8	Bolt M4x8	2	2
	木螺丝M5X25	Wood Screw M5X25	4	4
	尼龙垫圈	Nylon gastet	2	2
	支架	Breackt	1	0
	平垫圈	Washer	0	1
	后纽扣	Head Hinge	2	2
	六角扳手1.0 (1.27) mm 根据旋梭放置	Hexagonal Wreech 1.0 (1.27mm)ccording	1	1
六角扳手2/2.5/3/4/5mm	Hexagonal Wreech 2/2.5/3/4/5mm	1	1	
14	接地线	Ground line	1	1
15	线架组	Thread Stand Complete Set	1	1

# 成套智联 让服装智造无限可能



杰克股份官方微信



杰克股份官方抖音



杰克资料库



参观杰克

400-8876-858  
[www.chinajack.com](http://www.chinajack.com)

杰克科技股份有限公司  
浙江省台州市椒江区东海大道东段1008号  
电话 :0086-576-88177788 88177789  
传真 :0086-576-88177758

JACK TECHNOLOGY CO.,LTD  
No.1008, Donghai Road East, Jiaojiang District,  
Taizhou city, Zhejiang, China  
TEL:0086-576-88177788 88177789  
FAX:0086-576-88177758